



HM62X

HM62X



**SLIM
DESIGN**

TORAY

handmade in Poland

HM62X is the newest series of spinning and casting Dragon's rods. Based on ultramodern nanographite preregs of one of the biggest world creator based on the X-CROSS NGT technology new one and two – pieces blanks were made, the products that are more technically advanced than each of the competitive brands. The precision of manufacturing process is so incredible that even the most sensitive models from the series, with very small diameter of the blank, are not grinded before varnishing. Elasticity, power, casting features, signal transmission, weight – all these features put the new Dragon's series on the first position of all spinning and casting rods.

In HM62X blanks such nanographite preregs were used:

- ❖ nanographite, stiffness 62 million PSI as a basic construction material;
- ❖ graphites 30 and 40 million PSI in blanks core and d partly in layers arranged obliquely to the axis of the rod.

Three basic benefits that X-Cross NGT gives to user of HM62X rod are:

- ❖ increase of endurance of rod on the longitudinal static overloads (about 30%) and dynamic (about 20%);
- ❖ increased resistance against mechanical damages;
- ❖ the change of the action of the rod in the direction of more progressive.

Finishing components of Dragon's HM62X series:

- ❖ Fuji Alconite K-Series guides;
- ❖ Fuji TVS i PTS reel's handle;
- ❖ class AAA (Extra Premium) Portuguese cork;
- ❖ specially designed graphite insert 3K woven;
- ❖ Pro Wrap frappings;
- ❖ Thread Master varnish.



One piece rods of fast action

Two models for fishing for ide, chub, perch and trout. Length: 1.90, 1.92 m, casting weight to 12 and 16 g.

Item no.	name	length [m / ft]	c.w. [g / oz.]	action	power	transp. [m]	sec.	weight [g]	r.g. [cm]	pX	pS	pT
29-22-189	HM62X (spin.)	1.90 • 6'3"	3-12 • 7/16	Fast	L	1.90	1	87	19.0	9	20	4.5
29-22-190	HM62X (cast.)	1.90 • 6'3"	3-12 • 7/16	Fast	L	1.90	1	89	20.0	10	10	4
29-24-190	HM62X (cast.)	1.92 • 6'4"	5-16 • 9/16	Fast	ML	1.92	1	95	21.0	10	10	4
29-24-191	HM62X (spin.)	1.92 • 6'4"	5-16 • 9/16	Fast	ML	1.92	1	89	20.0	9	20	4.5



One piece rods of very fast action

Perfectly prepared set of four rods for fishing for zanders and pikes. Classic length: 1.98 m and mass limit of the lure: 21, 25, 28 i 35 g.

Item no.	name	length [m / ft]	c.w. [g / oz.]	action	power	transp. [m]	sec.	weight [g]	r.g. [cm]	pX	pS	pT
29-26-196	HM62X (cast.)	1.98 • 6'6"	7-21 • 3/4	X-Fast	M	1.98	1	101	22.0	10	10	4
29-26-197	HM62X (spin.)	1.98 • 6'6"	7-21 • 3/4	X-Fast	M	1.98	1	109	21.0	9	20	4.5
29-27-197	HM62X (spin.)	1.98 • 6'6"	10-25 • 7/8	X-Fast	M	1.98	1	115	22.0	9	25	5
29-27-198	HM62X (cast.)	1.98 • 6'6"	10-25 • 7/8	X-Fast	M	1.98	1	108	23.0	10	10	4
29-28-197	HM62X (spin.)	1.98 • 6'6"	14-28 • 1	X-Fast	M	1.98	1	123	22.0	9	25	5
29-28-198	HM62X (cast.)	1.98 • 6'6"	14-28 • 1	X-Fast	M	1.98	1	115	23.0	10	10	4
29-30-197	HM62X (spin.)	1.98 • 6'6"	18-35 • 1 1/4	X-Fast	MH	1.98	1	129	23.0	9	25	5
29-30-198	HM62X (cast.)	1.98 • 6'6"	18-35 • 1 1/4	X-Fast	MH	1.98	1	121	24.0	10	10	4



Two piece rods of slow action

New

Two chub & ide classic rods with slow action and 1-10 g lure weight. Ultra modern blanks with incredibly small diameter and weight.

Item no.	name	length [m / ft]	c.w. [g / oz.]	action	power	transp. [m]	sec.	weight [g]	r.g. [cm]	pX	pS	pT
29-21-275	HM62X (spin.)	2.75 • 9'	1-10 • 3/8	Medium-Slow	UL	1.40	2	113	25.0	11	20	4
29-21-290	HM62X (spin.)	2.90 • 9'6"	1-10 • 3/8	Medium-Slow	UL	1.50	2	119	26.5	11	20	4



Two piece rods of medium action

Slightly longer (2.13 and 2.28 m) with significantly stronger deflection of the rod for fishing for perch, chub and ide. Max c.w. is 10 and 16 g for given lengths.

Item no.	name	length [m / ft]	c.w. [g / oz.]	action	power	transp. [m]	sec.	weight [g]	r.g. [cm]	pX	pS	pT
29-21-213	HM62X (spin.)	2.13 • 7'	2-10 • 3/8	Medium-Fast	UL	1.10	2	94	21.0	10	18	5
29-24-228	HM62X (spin.)	2.28 • 7'6"	5-16 • 9/16	Medium-Fast	M	1.18	2	103	22.0	10	20	4.5



Two piece rod with fast action

16 and 21 g weight limit of the lure with 1.92 and 1.98 lengths is an offer for those who fish for perch but it can also be good for those who fish for trout.

Item no.	name	length [m / ft]	c.w. [g / oz.]	action	power	transp. [m]	sec.	weight [g]	r.g. [cm]	pX	pS	pT
29-24-192	HM62X (spin.)	1.92 • 6'4"	5-16 • 9/16	Fast	ML	1.00	2	95	20.0	9	20	4.5
29-26-198	HM62X (spin.)	1.98 • 6'6"	7-21 • 3/4	Fast	M	1.03	2	106	21.0	9	20	4.5



Two piece rods of very fast action

Prepared for anglers who fish for pikes but are also good for deep, demanding heavy lure zander fisheries.

Item no.	name	length [m / ft]	c.w. [g / oz.]	action	power	transp. [m]	sec.	weight [g]	r.g. [cm]	pX	pS	pT
New 29-23-245	HM62X (spin.)	2.45 • 8'	3-15 • 1/2	X-Fast	ML	1.27	2	111	24.0	11	20	4.5
New 29-23-275	HM62X (spin.)	2.75 • 9'	3-15 • 1/2	X-Fast	ML	1.40	2	115	25.5	11	20	4.5
New 29-26-245	HM62X (spin.)	2.45 • 8'	4-21 • 3/4	X-Fast	M	1.27	2	126	24.0	10	25	4.5
New 29-27-245	HM62X (spin.)	2.45 • 8'	5-25 • 7/8	X-Fast	M	1.27	2	126	24.5	10	25	4.5
New 29-27-275	HM62X (spin.)	2.75 • 9'	5-25 • 7/8	X-Fast	M	1.40	2	139	28.0	10	25	5
New 29-29-245	HM62X (spin.)	2.45 • 8'	7-30 • 1 1/8	X-Fast	M	1.27	2	130	25.0	10	25	5
New 29-29-275	HM62X (spin.)	2.75 • 9'	7-30 • 1 1/8	X-Fast	M	1.40	2	145	29.0	10	25	5
New 29-29-290	HM62X (spin.)	2.90 • 9'6"	7-30 • 1 1/8	X-Fast	M	1.50	2	156	30.5	10	25	5
29-30-195	HM62X (spin.)	1.95 • 6'5"	18-35 • 1 1/4	X-Fast	MH	1.01	2	109	23.0	9	25	5
29-30-213	HM62X (spin.)	2.13 • 7'	18-35 • 1 1/4	X-Fast	MH	1.10	2	115	24.0	10	25	5
New 29-30-245	HM62X (spin.)	2.45 • 8'	10-35 • 1 1/4	X-Fast	MH	1.27	2	134	25.5	10	25	5
New 29-30-275	HM62X (spin.)	2.75 • 9'	10-35 • 1 1/4	X-Fast	MH	1.40	2	150	30.0	10	25	5



In the offer all the HM62X blanks can be found. Now you can buy them and order Dragon HM62X rods in your favourite workshop according for your own design.

Item no.	name	length [m / ft]	c.w. [g / oz.]	action	power	sec.	weight [g]
B29-21-213	HM62X	2.13 • 7'	2-10 • 3/8	Medium-Fast	UL	2	25.0
New B29-21-275	HM62X	2.75 • 9'	1-10 • 3/8	Medium-Slow	UL	2	
New B29-21-290	HM62X	2.90 • 9'6"	1-10 • 3/8	Medium-Slow	UL	2	
B29-22-189	HM62X	1.90 • 6'3"	3-12 • 7/16	Fast	L	1	20.6
New B29-23-245	HM62X	2.45 • 8'	3-15 • 1/2	X-Fast	ML	2	
New B29-23-275	HM62X	2.75 • 9'	3-15 • 1/2	X-Fast	ML	2	
B29-24-191	HM62X	1.92 • 6'4"	5-16 • 9/16	Fast	ML	1	25.6
B29-24-192	HM62X	1.92 • 6'4"	5-16 • 9/16	Fast	ML	2	27.4
B29-24-228	HM62X	2.28 • 7'6"	5-16 • 9/16	Medium-Fast	ML	2	31.8
B29-26-197	HM62X	1.98 • 6'6"	7-21 • 3/4	X-Fast	M	1	29.4
B29-26-198	HM62X	1.98 • 6'6"	7-21 • 3/4	Fast	M	2	34.4
New B29-26-245	HM62X	2.45 • 8'	4-21 • 3/4	X-Fast	M	2	46.0

Item no.	name	length [m / ft]	c.w. [g / oz.]	action	power	sec.	weight [g]
B29-27-197	HM62X	1.98 • 6'6"	10-25 • 7/8	X-Fast	M	1	37.4
New B29-27-245	HM62X	2.45 • 8'	5-25 • 7/8	X-Fast	M	2	49.0
New B29-27-275	HM62X	2.75 • 9'	5-25 • 7/8	X-Fast	M	2	59.0
B29-28-197	HM62X	1.98 • 6'6"	14-28 • 1	X-Fast	M	1	39.0
New B29-29-245	HM62X	2.45 • 8'	7-30 • 1 1/8	X-Fast	M	2	53.0
New B29-29-275	HM62X	2.75 • 9'	7-30 • 1 1/8	X-Fast	M	2	63.0
New B29-29-290	HM62X	2.90 • 9'6"	7-30 • 1 1/8	X-Fast	M	2	69.0
B29-30-195	HM62X	1.95 • 6'5"	18-35 • 1 1/4	X-Fast	MH	2	38.6
B29-30-197	HM62X	1.98 • 6'6"	18-35 • 1 1/4	X-Fast	MH	1	44.4
B29-30-213	HM62X	2.13 • 7'	18-35 • 1 1/4	X-Fast	MH	2	43.8
New B29-30-245	HM62X	2.45 • 8'	10-35 • 1 1/4	X-Fast	MH	2	58.0
New B29-30-275	HM62X	2.75 • 9'	10-35 • 1 1/4	X-Fast	MH	2	70.0

HM62X spin. (B29-30-213)



pX – quantity of the guides pS – size of the lead guide pT – size of the top guide

HM-X ■ handmade in Poland



X-Cross CGT advantages:

- ❖ blank strength to static overloads increased by 25%, to dynamic overloads by 10%;
- ❖ much higher resistance to mechanical damages, compared to HM80 series;
- ❖ action of the rod changes into more progressive; what results in better "play" during the fight with fish and better casting abilities.

In the blanks of the HM-X rods such preregs of Japanese Toray company were used:

- ❖ 72 mln PSI as basic graphite;
- ❖ 80 mln PSI in some areas, where lighter weight is the most important;
- ❖ 24, 36, 40 mln PSI graphites in blank core and in 45 degrees layers, type and percentage depends on the rod type.

Components in HM-X rods:

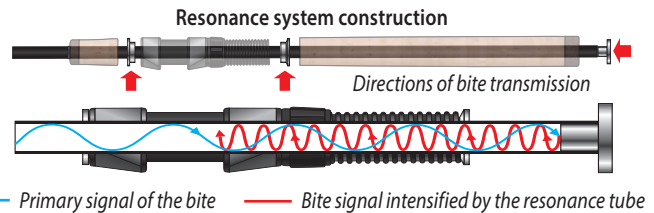
- ❖ Fuji Alconite K-series guides;
- ❖ Fuji SK2 reel seats;
- ❖ wooden reel seat insert;
- ❖ AAA-grade Portuguese cork;
- ❖ Gudebrod threads;
- ❖ Trondak varnish.



In HMG spinning rods we introduce **Fuji Alconite K-series** guides. This concept of the Japanese company, unveiled for the first time at the ICAST 2009, is an ideal solution for fishing with braids. The design of a frame in 100% prevents the possibility of line tangling on a frame. The angle of the ring, different than traditional, is optimized to move the line better through the rings and allow longer casts.



"Resonance system" will help you to feel whenever your lure is touched by the mouth of predator. Thanks to tube and resonance rings the spinning rod carries the reinforced bite signal, allows better control of the lure and to feel almost every touch, for example on the underwater snag. The effect is better presentation of the lure and quicker angler reaction on the bite. Nowadays RESONANCE SYSTEM is used in few series of our rods. This solution has gained recognition among large range of spinning anglers.



Two – pieces rods with medium action

Item no.	name	length [m]	c.w. [g]	action	transp. [m]	sec. weight [g]	r.g. [cm]	pX	pS	pT
29-12-245	Trout II	2.45	2-14	Med-Fast	1.24	2	116	24.5	10	20 4.5
29-12-275	Demon II	2.75	2-14	Med-Fast	1.40	2	130	28.5	10	25 5



Two – pieces rods with fast action

Item no.	name	length [m]	c.w. [g]	action	transp. [m]	sec. weight [g]	r.g. [cm]	pX	pS	pT
29-15-275	Mamba II	2.75	3-18	Fast	1.40	2	143	29.0	10	25 5
29-17-245	Sensitive II	2.45	5-21	Fast	1.27	2	132	26.0	10	20 4.5
29-38-275	Hitman	2.75	7-25	Fast	1.40	2	153	29.5	10	30 7
29-39-290	Ranger	2.90	10-28	Fast	1.50	2	186	30.0	10	30 7
29-40-260	Phantom	2.60	7-30	Fast	1.32	2	156	27.5	10	30 7



■ After purchasing of Dragon HM rod you can register to our database at: www.firmadragon.eu banner: KLUB DRAGON HM. You will receive exclusive shirt with Dragon HM logo.

FISHMAKER C.R.C. EVO.1



TORAY

FUJII

New

A new benchmark of quality among mass-produced rods. The highest level of refinement of individual elements. Shocking action, very fast in first test and when casting, and easily turns into progressive after a bite and during a fight. Sensitivity and control of the lure that will surprise every angler.

Components of the FISHMAKER C.R.C. EVO.1:

- ❖ Fuji SIC guides;
- ❖ Fuji SK2™ reel seat with 3K woven graphite insert;
- ❖ handles connecting metal, 3K woven graphite, EVA and rubber cork;
- ❖ Two-component, ageless epoxy varnish for Thread Master;
- ❖ ProWrap threads.

In the blanks of FISHMAKER C.R.C. EVO.1 series following graphites from the Japanese company Toray were used:

- ❖ basic material of the blanks: 40 and 46 mln PSI graphites;
- ❖ 62 million PSI graphite with increased stiffness, both in zones requiring weight reduction and for adjustment of the action;
- ❖ 36 million PSI graphite in the core of the blank.



Two-pieces spinning rods

Item no.	name	length [m / ft]	c.w. [g / oz.]	action	power	transp. [m]	sec. weight [g]	r.g. [cm]	pX	pS	pT
28-34-213	Fishmaker C.R.C. EVO.1	2.13 • 7'	10-21 • 3/4	X-Fast	MH	1.11	2	105	22.5	9	20 4.5
28-34-228	Fishmaker C.R.C. EVO.1	2.28 • 7'6"	10-21 • 3/4	X-Fast	MH	1.19	2	113	23.5	10	20 4.5
28-34-245	Fishmaker C.R.C. EVO.1	2.45 • 8'	10-21 • 3/4	X-Fast	MH	1.26	2	125	24.5	10	20 4.5
28-35-213	Fishmaker C.R.C. EVO.1	2.13 • 7'	14-25 • 7/8	X-Fast	MH	1.11	2	112	23.0	9	20 4.5
28-35-228	Fishmaker C.R.C. EVO.1	2.28 • 7'6"	14-25 • 7/8	X-Fast	MH	1.19	2	121	24.0	10	20 4.5
28-35-245	Fishmaker C.R.C. EVO.1	2.45 • 8'	14-25 • 7/8	X-Fast	MH	1.26	2	123	25.0	10	20 4.5
28-35-275	Fishmaker C.R.C. EVO.1	2.75 • 9'	14-25 • 7/8	X-Fast	MH	1.42	2	145	26.5	11	25 5
28-36-213	Fishmaker C.R.C. EVO.1	2.13 • 7'	18-30 • 1 1/8	X-Fast	MH	1.11	2	117	23.5	9	25 5
28-36-245	Fishmaker C.R.C. EVO.1	2.45 • 8'	18-30 • 1 1/8	X-Fast	MH	1.26	2	135	25.5	10	25 5
28-36-275	Fishmaker C.R.C. EVO.1	2.75 • 9'	18-30 • 1 1/8	X-Fast	MH	1.42	2	149	27.0	11	25 5
28-37-213	Fishmaker C.R.C. EVO.1	2.13 • 7'	21-35 • 1 1/4	X-Fast	MH	1.11	2	123	24.0	9	25 5
28-37-245	Fishmaker C.R.C. EVO.1	2.45 • 8'	21-35 • 1 1/4	X-Fast	MH	1.26	2	139	26.0	10	25 5
28-37-275	Fishmaker C.R.C. EVO.1	2.75 • 9'	21-35 • 1 1/4	X-Fast	MH	1.42	2	153	27.5	11	25 5
28-37-290	Fishmaker C.R.C. EVO.1	2.90 • 9'6"	21-35 • 1 1/4	X-Fast	MH	1.49	2	164	29.0	11	25 5



Fishmaker C.R.C. EVO.1 (28-34-214)

Two-pieces casting rods

Item no.	name	length [m / ft]	c.w. [g / oz.]	action	power	transp. [m]	sec. weight [g]	r.g. [cm]	pX	pS	pT
28-34-214	Fishmaker C.R.C. EVO.1	2.13 • 7'	10-21 • 3/4	X-Fast	MH	1.11	2	102	21.5	10	10 4
28-35-214	Fishmaker C.R.C. EVO.1	2.13 • 7'	14-25 • 7/8	X-Fast	MH	1.11	2	111	22.0	10	10 4
28-36-214	Fishmaker C.R.C. EVO.1	2.13 • 7'	18-30 • 1 1/8	X-Fast	MH	1.11	2	114	22.5	10	10 4
28-37-214	Fishmaker C.R.C. EVO.1	2.13 • 7'	21-35 • 1 1/4	X-Fast	MH	1.11	2	118	23.0	10	10 4



Fishmaker C.R.C. EVO.1 (28-35-213)

One-piece spinning rods

Item no.	name	length [m / ft]	c.w. [g / oz.]	action	power	transp. [m]	sec. weight [g]	r.g. [cm]	pX	pS	pT
28-35-197	Fishmaker C.R.C. EVO.1	1.98 • 6'6"	14-25 • 7/8	X-Fast	MH	1.98	1	96	23.0	9	20 4.5



Fishmaker C.R.C. EVO.1 (28-35-197)

One-piece casting rods

Item no.	name	length [m / ft]	c.w. [g / oz.]	action	power	transp. [m]	sec. weight [g]	r.g. [cm]	pX	pS	pT
28-35-199	Fishmaker C.R.C. EVO.1	1.98 • 6'6"	14-25 • 7/8	X-Fast	MH	1.98	1	96	22.0	10	10 4



Fishmaker C.R.C. EVO.1 (28-35-199)



MODERATE SL Ti



TORAY

New

The assumption of this series was to create short, light and sensitive rods, focused on anglers who prefer a bit more sophisticated type of spinning. However, there are also a few slightly stronger rods here. Each of them has a quick action and a deep and warm curve, thanks to which fighting even a small fish is a lot of fun, and at the same time is fully controlled.



Components of the MODERATE SL Ti:

- ❖ SeaGuide Titanium SIC guides;
- ❖ SeaGuide SK2-type reel seat with graphite insert;
- ❖ handles connecting metal and EVA;
- ❖ Two-component, ageless epoxy varnish for Thread Master;
- ❖ ProWrap threads.

In the blanks of MODERATE SL Ti series following graphites from the Japanese company Toray were used:

- ❖ basic material of the blanks: 40 and 46 mln PSI graphites;
- ❖ 62 million PSI graphite with increased stiffness in zones requiring weight reduction;
- ❖ 36 million PSI graphite in the core of the blank.

X-LITE TOURNAMENT RODS
MODERATE SL Ti

Two-pieces spinning rods

Item no.	name	length [m]	c.w. [g]	action	power	transp. [m]	sec.	weight [g]	r.g. [cm]	pX	pS	pT
28-82-198	Spinn 12	1.98 • 6'6"	1-12 • 3/8	Fast	UL	1.03	2	95	20.5	8	16	4
28-83-198	Spinn 15	1.98 • 6'6"	2-15 • 1/2	Fast	L	1.03	2	96	20.5	8	16	4
28-84-198	Spinn 18	1.98 • 6'6"	3-18 • 5/8	Fast	L	1.03	2	100	20.5	8	16	4
28-85-198	Spinn 21	1.98 • 6'6"	4-21 • 3/4	Fast	ML	1.03	2	106	20.5	8	16	4
28-85-213	Spinn 21	2.13 • 7'	4-21 • 3/4	Fast	ML	1.10	2	113	22.0	9	16	4
28-86-228	Spinn 25	2.28 • 7'6"	5-25 • 7/8	Fast	M	1.18	2	119	23.5	10	16	4
28-86-245	Spinn 25	2.45 • 8'	5-25 • 7/8	Fast	M	1.26	2	134	25.0	10	20	5
28-87-198	Spinn 28	1.98 • 6'6"	7-28 • 1	Fast	M	1.03	2	116	20.5	8	16	4
28-87-213	Spinn 28	2.13 • 7'	7-28 • 1	Fast	M	1.10	2	121	22.0	9	20	5
28-89-245	Spinn 35	2.45 • 8'	14-35 • 1 1/4	Fast	MH	1.26	2	142	25.0	10	20	5



Moderate SL Ti Spinn 21 (28-85-198)

Two-pieces casting rods

Item no.	name	length [m]	c.w. [g]	action	power	transp. [m]	sec.	weight [g]	r.g. [cm]	pX	pS	pT
28-85-214	Cast 21	2.13 • 7'	4-21 • 3/4	Fast	ML	1.10	2	116	23.5	11	10	5
28-87-214	Cast 28	2.13 • 7'	7-28 • 1	Fast	M	1.10	2	122	23.5	11	10	5



Moderate SL Ti Cast 21 (28-85-214)

NANO LITE EVO AIR



NANO LITE EVO spinning rods are being constructed from the newest graphite prepregs from the Japanese TORAY company – from carbon fibers with very precise molecular structure. The smaller carbon particles of the prepreg allowed it to reduce its thickness while maintaining all operational parameters.

nanoLITE EVO AIR

Main features of NanoLITE series:

- ❖ low weight of blank and whole the rod;
- ❖ strong, progressive blank bend under loading what guarantee comfortable fight;
- ❖ blanks with sides of standard thickness, but smaller outside diameter;
- ❖ easy castings with extremely light lures;
- ❖ above – standard sensitiveness of the tip.

In NanoLITE blanks TORAY company prepregs were used:

- ❖ high module graphite 46 mln PSI as a basic construction material;
- ❖ high module graphite 36 mln PSI in outer layers;
- ❖ strength graphite 30 mln PSI in the czore and the main part of blank.

Thanks to the use of nanotechnology the blanks from the series:

- ❖ have smaller diameter;
- ❖ weight less than those of similar strength and length “traditional” ones;
- ❖ their individual layers adhere perfectly to each other;
- ❖ they contain less epoxy resin, without using CGT technology;
- ❖ they are more repeatable in mass production;
- ❖ they have less so called hidden defects;
- ❖ with low weight and fast action, they are made from less stiff prepregs than similar “traditional” rods

Finishing components of NanoLITE series are:

- ❖ Titanium SiC guides with superlight but very strong frames;
- ❖ SK2 reel handle;
- ❖ the highest quality tough and light EVA foam;
- ❖ two-component, not aging epoxy TRONDAK varnish;
- ❖ Gudebrod threads.

Two-pieces spinning rods

Item no.	name	length [m]	c.w. [g]	action	power	transp. [m]	sec. weight [g]	r.g. [cm]	pX	pS	pT	
26-05-198	Spinn 10	1.98	1–10	Med-Fast	UL	1.03	2	86	22.0	9	16	4
26-07-213	Spinn 14	2.13	3–14	Fast	UL	1.11	2	91	22.0	9	16	4
26-07-228	Spinn 14	2.28	3–14	Fast	UL	1.18	2	100	24.0	10	20	4
26-07-245	Spinn 14	2.45	3–14	Fast	UL	1.26	2	102	24.0	10	20	4
26-08-213	Spinn 16	2.13	4–16	Fast	L	1.11	2	22.0	9	16	4	
26-08-228	Spinn 16	2.28	4–16	Fast	L	1.18	2	24.0	10	20	4	
26-09-198	Spinn 18	1.98	5–18	X-Fast	L	1.03	2	100	22.0	9	16	4
26-09-213	Spinn 18	2.13	5–18	X-Fast	L	1.11	2	105	22.0	9	16	4
26-09-228	Spinn 18	2.28	5–18	X-Fast	L	1.18	2	113	24.0	10	20	4

One-piece spinning rods

Item no.	name	length [m]	c.w. [g]	action	power	transp. [m]	sec. weight [g]	r.g. [cm]	pX	pS	pT	
26-05-197	Spinn 10	1.98	1–10	Med-Fast	UL	1.98	1	85	22.0	9	16	4
26-09-197	Spinn 18	1.98	5–18	X-Fast	L	1.98	1	99	22.0	9	16	4



NanoLITE EVO Air Spinn 14 (26-07-228)

NanoLITE EVO Air Spinn 10 (26-05-197)

pX – quantity of the guides pS – size of the lead guide pT – size of the top guide

PROGUIDE X

TORAY Fuji KR-CONCEPT



Components in the ProGUIDE X series are:

- ❖ Fuji Alconite K-series guides selected according to KR-CONCEPT;
- ❖ reel seat Fuji PTS (spinning equipment) or TVS (casting equipment);
- ❖ handles from second generation "wooven carbon" graphite;
- ❖ two-pieces, ageless, epoxy varnish;
- ❖ Gudebrod threads.

In the blanks of the ProGUIDE X rods such prepreps of Japanese Toray company were used:

- ❖ the basic material of the blanks: hi-modulus graphites 40 and 46 mln PSI;
- ❖ 62 mln PSI higher stiffness graphite, mainly in places where weight reduction was needed;
- ❖ 30 mln PSI strength graphite in core.



Extralight tip spinn rods.

Item no.	name	length [m]	c.w. [g]	action	transp. [m]	sec. weight [g]	r.g. [cm]	pX	pS	pT	
26-82-198	ProGUIDE X	1.98	1-10	X-Fast	1.02	2	100	21.0	8	16	4
26-82-213	ProGUIDE X	2.13	1-10	X-Fast	1.10	2	106	22.0	9	16	4
26-82-245	ProGUIDE X	2.45	1-10	X-Fast	1.26	2	120	23.0	10	20	4
26-82-275	ProGUIDE X	2.75	1-10	X-Fast	1.41	2	140	24.0	11	20	4
26-82-199	ProGUIDE X (cast.)	1.98	1-10	X-Fast	1.02	2	105	21.0	9	10	4



Two-pieces spinning rods

Item no.	name	length [m]	c.w. [g]	action	transp. [m]	sec. weight [g]	r.g. [cm]	pX	pS	pT	
26-84-198	ProGUIDE X	1.98	2-15	Fast	1.02	2	99	21.0	8	16	4
26-85-198	ProGUIDE X	1.98	3-18	X-Fast	1.02	2	95	21.0	8	16	4
26-85-213	ProGUIDE X	2.13	3-18	X-Fast	1.10	2	106	22.0	9	16	4
26-85-228	ProGUIDE X	2.28	3-18	X-Fast	1.19	2	111	23.0	10	20	4
26-85-245	ProGUIDE X	2.45	3-18	X-Fast	1.26	2	133	24.5	10	20	4
26-85-275	ProGUIDE X	2.75	3-18	X-Fast	1.41	2	131	25.5	11	20	4
26-86-198	ProGUIDE X	1.98	4-21	X-Fast	1.02	2	114	21.0	8	16	4
26-86-213	ProGUIDE X	2.13	4-21	X-Fast	1.10	2	112	22.0	9	16	4
26-86-228	ProGUIDE X	2.28	4-21	X-Fast	1.19	2	114	23.0	10	20	4
26-86-245	ProGUIDE X	2.45	4-21	X-Fast	1.26	2	119	24.5	10	20	4
26-86-275	ProGUIDE X	2.75	4-21	Fast	1.41	2	153	26.0	11	20	4
26-87-213	ProGUIDE X	2.13	5-25	X-Fast	1.11	2	123	22.0	9	16	4
26-87-214	ProGUIDE X	2.13	7-28	X-Fast	1.11	2	130	22.0	9	16	4
26-87-228	ProGUIDE X	2.28	5-25	X-Fast	1.19	2	143	23.0	10	20	4
26-87-245	ProGUIDE X	2.45	7-28	X-Fast	1.26	2	148	25.0	10	20	4
26-88-275	ProGUIDE X	2.75	10-30	X-Fast	1.41	2	155	27.0	11	20	4
26-88-305	ProGUIDE X	3.05	10-30	X-Fast	1.57	2	154	28.0	11	20	5
26-89-213	ProGUIDE X	2.13	14-35	X-Fast	1.11	2	136	24.0	10	20	4
26-89-245	ProGUIDE X	2.45	14-35	X-Fast	1.26	2	128	25.5	10	20	5
26-89-275	ProGUIDE X	2.75	14-35	X-Fast	1.41	2	167	27.5	11	20	5
26-89-290	ProGUIDE X	2.90	14-35	X-Fast	1.49	2	175	27.0	11	20	5
26-89-292	ProGUIDE X	2.92	14-35	Fast	1.51	2	187	30.0	11	25	6
26-90-228	ProGUIDE X	2.28	18-42	X-Fast	1.19	2	155	23.0	10	20	5

The rod 26-89-292 was designed for fishing for bull-trout. Bigger guides (from 25 to 6) will reduce the problem of freezing the line in winter conditions and the bottom elongate about 3 cm will help with long sea castings.



Two-pieces jerk rods

Item no.	name	length [m]	c.w. [g]	action	transp. [m]	sec. weight [g]	r.g. [cm]	pX	pS	pT	
26-97-199	ProGUIDE X (cast.)	1.98	80-150	Fast	1.02	2	149	23.0	9	10	5



Known from the previous Super Tigh Wind® series one piece blanks – small inner hole and the thickness of the blank's case significantly bigger than in traditional spinning rods with the same outer diameter. Slim and very strong rods with wide range of applications, such as fishing in the sea with light pilkers. Both models are offered as proper for spinning reel as well as for multiplier. The possibility of dismantling the handle facilitates transport of the rods, especially when you travel by plane.

Item no.	name	length [m]	c.w. [g]	action	transp. [m]	sec. weight [g]	r.g. [cm]	pX	pS	pT	
26-87-218	ProGUIDE X	2.18	7-28	X-Fast	1.90	1+1	124	24.0	9	20	4
26-87-219	ProGUIDE X (cast.)	2.18	7-28	X-Fast	1.90	1+1	134	23.0	10	10	4
26-89-218	ProGUIDE X	2.18	14-35	X-Fast	1.90	1+1	131	24.0	9	20	4
26-89-219	ProGUIDE X (cast.)	2.18	14-35	X-Fast	1.90	1+1	141	23.0	10	10	4
26-90-218	ProGUIDE X	2.18	18-42	X-Fast	1.90	1+1	141	24.0	9	20	4
26-90-219	ProGUIDE X (cast.)	2.18	18-42	X-Fast	1.90	1+1	149	23.0	10	10	4
26-91-218	ProGUIDE X	2.18	21-56	Fast	1.90	1+1	152	24.0	9	20	4
26-91-219	ProGUIDE X (cast.)	2.18	21-56	Fast	1.90	1+1	164	23.0	10	10	4
26-92-198	ProGUIDE X	1.98	25-60	Fast	1.63	1+1	131	23.0	8	20	5
26-92-199	ProGUIDE X (cast.)	1.98	25-60	Fast	1.63	1+1	140	23.0	9	10	5
26-94-198	ProGUIDE X	1.98	40-90	Fast	1.63	1+1	147	23.0	8	20	5
26-94-199	ProGUIDE X (cast.)	1.98	40-90	Fast	1.63	1+1	161	23.0	9	10	5



TEAM DRAGON STEALTH

Ceramic Graphite Technology



Limited, exclusive series of one piece spinning rods. Designed under the guidance of a few members of TEAM DRAGON to fish for zanders and pikes from a boat. Unique design of blank which is based on black colour and super modern cover of the handles with a special material.

Main assumptions of the series are:

- ❖ X-Fast action;
- ❖ light blanks, relatively thick walls;
- ❖ easy casting with light and medium heavy lures;
- ❖ incredibly fast reaction while fight and jerk.

Finishing components of TEAM DRAGON series are:

- ❖ Fuji Alconite K-Series guides chosen according to KR-CONCEPT;
- ❖ Fuji TVS reel's handle;
- ❖ special non-slip material on the handle;
- ❖ aluminium, anodized elements of handle;
- ❖ two-component, not aging epoxy TRONDAK varnish;
- ❖ Gudebrod threads.

In the TEAM DRAGON blanks following preprejs of Japanese Toray company were used (in different proportions according to the rod's action):

- ❖ high module graphite 46 mln PSI as a basic construction material;
- ❖ 30 and 36 mln PSI in the core and its warp and the layers arranged diagonally to blanks axis;
- ❖ super stiff and light 60 mln PSI graphite in the parts of blank where it was very important to low the weight and increase the dynamic.

One-piece spinning rods

Item no.	name	[m / ft]	c.w. [g / oz.]	action	power	transp. [m]	sec.	weight [g]	r.g. [cm]	pX	pS	pT
25-41-198	TD Stealth	1.98 • 6'6"	18 • 5/8	X-Fast	M	1.98	1	104	25.0	9	20	4
25-42-198	TD Stealth	1.98 • 6'6"	21 • 3/4	X-Fast	M	1.98	1		25.0	9	20	4
25-43-198	TD Stealth	1.98 • 6'6"	30 • 1 1/8	X-Fast	M	1.98	1		25.0	9	20	4
25-44-198	TD Stealth	1.98 • 6'6"	42 • 1 1/2	X-Fast	MF	1.98	1	128	25.0	9	20	4

Two-pieces spinning rods

New

Item no.	name	[m / ft]	c.w. [g / oz.]	action	power	transp. [m]	sec.	weight [g]	r.g. [cm]	pX	pS	pT
25-41-213	TD Stealth	2.13 • 7'	18 • 5/8	X-Fast	M	1.10	2		25.0	9	20	4
25-42-213	TD Stealth	2.13 • 7'	21 • 3/4	X-Fast	M	1.10	2		25.0	9	20	4
25-43-213	TD Stealth	2.13 • 7'	30 • 1 1/8	X-Fast	M	1.10	2		25.0	9	20	4
25-44-213	TD Stealth	2.13 • 7'	42 • 1 1/2	X-Fast	MF	1.10	2		25.0	9	20	4



Team Dragon Stealth (25-41-213)

Team Dragon Stealth (25-41-198)

pX – quantity of the guides pS – size of the lead guide pT – size of the top guide

CXT FC-X FAST CAST

Fuji K&R CONCEPT TORAY



CXT FC-X FastCast

In Dragon CXT FC-X blanks were used prepregs made by Japanese Toray company (in different proportions depending on the type of the rod's action) such as:

- ❖ high-module graphites of 46 and 60 mln PSI, as basic construction material;
- ❖ graphites 30 and 40 mln PSI in the blank core and also in the layers arranged obliquely to the axis of the blank;
- ❖ so called space grade graphite 80 mln PSI in these parts of the blanks, where weight reduction was important and increasing the dynamic.

The main objectives of CXT FC-X series are

- ❖ extra fast action (X-Fast);
- ❖ blanks with quite thick walls, but with smaller than in standards internal hole and tapered butt section;
- ❖ ease in casting with light and medium heavy lures;
- ❖ progressive deflexion under the load, what gives confident fight with small amount of lost fish;
- ❖ the construction of blanks based on the trends which dominate on the Japanese market.

Finishing components of CXT FC-X series are:

- ❖ Fuji Alconite K-Series guides;
- ❖ Fuji PTS and TVS reel seats;
- ❖ the highest class hard foam EVA;
- ❖ aluminium, anodized elements of the handle;
- ❖ Gudebrod threads;
- ❖ Trondak varnish.

One-piece spinning rods

Item no.	name	length [m]	c.w. [g]	action	transp. [m]	sec. weight [g]	r.g. [cm]	pX	pS	pT	
27-15-197	FastCast	1.98	4-21	X-Fast	1.98	1	111	26.0	9	20	4
27-16-197	FastCast	1.98	5-25	X-Fast	1.98	1	117	26.0	9	20	4
27-17-197	FastCast	1.98	7-28	X-Fast	1.98	1	120	26.0	9	20	4
27-18-197	FastCast	1.98	14-35	X-Fast	1.98	1	132	26.0	9	20	4



CXT FC-X FastCast (27-17-197)

Two-pieces spinning rods

Item no.	name	length [m]	c.w. [g]	action	transp. [m]	sec. weight [g]	r.g. [cm]	pX	pS	pT	
27-15-213	FastCast	2.13	4-21	X-Fast	1.11	2	133	26.0	9	20	4
27-16-213	FastCast	2.13	5-25	X-Fast	1.11	2	138	26.0	9	20	4
27-17-213	FastCast	2.13	7-28	X-Fast	1.11	2	26.0	9	20	4	
27-18-213	FastCast	2.13	14-35	X-Fast	1.11	2	26.0	9	20	4	



CXT FC-X FastCast (27-15-213)

One-piece casting rods

Item no.	name	length [m]	c.w. [g]	action	transp. [m]	sec. weight [g]	r.g. [cm]	pX	pS	pT	
27-15-199	FastCast	1.98	4-21	X-Fast	1.98	1	126	26.0	10	10	4
27-16-199	FastCast	1.98	5-25	X-Fast	1.98	1	127	26.0	10	10	4
27-17-199	FastCast	1.98	7-28	X-Fast	1.98	1	135	26.0	10	10	4
27-18-199	FastCast	1.98	14-35	X-Fast	1.98	1	142	26.0	10	10	4



CXT FC-X FastCast (27-17-199)

CXT SF-X SUPER FAST



CXT SF-X SuperFast

In Dragon CXT SF-X blanks were used prepregs made by Japanese Toray company (in different proportions depending on the type of the rod's action) such as:

- ❖ high-module graphites of 46–60 mln PSI, as basic construction material;
- ❖ graphites 24, and 40 mln PSI in the blank core and also in the layers arranged obliquely to the axis of the blank.

The main objectives of CXT SF-X series are

- ❖ fast or extra fast action;
- ❖ very slim blanks with quite thick walls, but with smaller than in standards internal hole;
- ❖ ease in casting with light and medium heavy lures;
- ❖ progressive deflexion under the load, what gives confident fight with small amount of lost fish;
- ❖ the construction of blanks based on the trends which dominate on the Japanese market.

Finishing components of CXT SF-X series are:

- ❖ Fuji Alconite K-Series guides;
- ❖ Fuji PTS and TVS reel seats;
- ❖ so called rubber cork – very resistant material which joins the cork and hard rubber;
- ❖ the highest class hard foam EVA;
- ❖ aluminium, anodized elements of the handle;
- ❖ Gudebrod threads;
- ❖ Trondak varnish.



One-piece spinning rods

Item no.	name	length [m]	c.w. [g]	action	transp. [m]	sec. weight [g]	r.g. [cm]	pX	pS	pT	
27-60-194	SuperFast	1.95	1–10	Fast	1.95	1	105	20.5	9	25	4
27-66-197	SuperFast	1.98	5–25	X-Fast	1.98	1	108	20.5	9	25	4



CXT SF-X SuperFast (27-66-197)

One-piece casting rods

Item no.	name	length [m]	c.w. [g]	action	transp. [m]	sec. weight [g]	r.g. [cm]	pX	pS	pT	
27-66-199	SuperFast	1.98	5–25	X-Fast	1.98	1	117	22.0	9	10	4



CXT SF-X SuperFast (27-66-199)



Two-pieces spinning rods

Item no.	name	length [m]	c.w. [g]	action	transp. [m]	sec. weight [g]	r.g. [cm]	pX	pS	pT	
27-51-190	SuperFast	1.90	1–12	Fast	0.98	2	93	21.5	8	25	4
27-52-190	SuperFast	1.90	2–14	Fast	0.98	2	114	21.0	8	25	4
27-53-192	SuperFast	1.92	3–16	X-Fast	0.99	2	102	21.5	8	25	4
27-54-198	SuperFast	1.98	3–18	X-Fast	1.02	2	120	20.5	9	25	4
27-55-200	SuperFast	2.00	4–21	X-Fast	1.03	2	115	21.0	9	25	4
27-56-198	SuperFast	1.98	5–25	X-Fast	1.01	2	108	23.5	9	25	4
27-57-198	SuperFast	1.98	6–28	X-Fast	1.02	2	107	20.5	9	25	4
27-58-195	SuperFast	1.95	10–35	X-Fast	1.00	2	126	21.5	9	25	4
27-58-213	SuperFast	2.13	14–35	X-Fast	1.10	2	113	26.0	9	25	4
27-59-213	SuperFast	2.13	18–42	X-Fast	1.10	2	119	22.5	9	25	4



CXT SF-X SuperFast (27-56-198)

Two-pieces casting rods

Item no.	name	length [m]	c.w. [g]	action	transp. [m]	sec. weight [g]	r.g. [cm]	pX	pS	pT	
27-53-193	SuperFast	1.92	3–16	X-Fast	0.99	2	106	21.5	9	10	4
27-54-199	SuperFast	1.98	3–18	X-Fast	1.02	2	127	22.0	10	10	4
27-55-201	SuperFast	2.00	4–21	X-Fast	1.03	2	121	22.5	10	10	4
27-56-199	SuperFast	1.98	5–25	X-Fast	1.01	2	112	23.5	10	10	4
27-58-196	SuperFast	1.95	10–35	X-Fast	1.00	2	126	21.5	9	10	4
27-58-214	SuperFast	2.13	14–35	X-Fast	1.10	2	119	26.0	10	10	4



CXT SF-X SuperFast (27-58-214)

CXT MS-X MICRO SPECIAL



CXT MS-X MicroSpecial

In Dragon CXT MS-X blanks were used prepregs made by Japanese Toray company (in different proportions depending on the type of the rod's action) such as:

- ❖ high-module graphites of 46–60 mln PSI, as basic construction material;
- ❖ graphites 24 and 40 mln PSI in the blank core and also in the layers arranged obliquely to the axis of the blank.

The main objectives of CXT MS-X series are:

- ❖ the diversity of actions – from medium slow to fast;
- ❖ very slim blanks with quite thick walls, but with smaller than in standards internal hole;
- ❖ ease in casting with light lures;
- ❖ full deflexion under the load, what gives confident fight with small amount of lost fish;
- ❖ the construction of blanks based on the trends which dominate on the Japanese market.

Finishing components of CXT MS-X series are:

- ❖ Fuji Alconite K-Series guides;
- ❖ Fuji PTS and TVS reel seats;
- ❖ the highest class hard foam EVA;
- ❖ aluminium, anodized elements of the handle;
- ❖ Gudebrod threads;
- ❖ Trondak varnish.



Two-pieces casting rods

Item no.	name	length [m]	c.w. [g]	action	transp. [m]	sec. weight [g]	r.g. [cm]	pX	pS	pT	
27-32-214	MicroSpecial	2.13	2–14	Med-Fast	1.10	2	96	20.0	10	10	4
27-33-229	MicroSpecial	2.28	2.5–16	Med-Fast	1.17	2	102	22.0	10	10	4



CXT MS-X MicroSpecial (27-32-214)

Two-pieces spinning rods

Item no.	name	length [m]	c.w. [g]	action	transp. [m]	sec. weight [g]	r.g. [cm]	pX	pS	pT	
27-28-198	MicroSpecial	1.98	0.5–6	Med-Slow	1.02	2	89	17.0	9	20	4
27-29-198	MicroSpecial	1.98	0.5–8	Med-Slow	1.02	2	90	17.0	9	20	4
27-30-190	MicroSpecial	1.90	1–10	Med-Slow	0.99	2	85	18.0	8	20	4
27-30-213	MicroSpecial	2.13	1–10	Med-Slow	1.10	2	90	20.0	9	20	4
27-31-198	MicroSpecial	1.98	1.5–12	Medium	1.02	2	85	18.0	9	20	4
27-32-213	MicroSpecial	2.13	2–14	Med-Fast	1.10	2	93	20.0	9	20	4
27-33-183	MicroSpecial	1.83	2.5–16	Med-Fast	0.94	2	92	17.0	8	20	4
27-33-228	MicroSpecial	2.28	2.5–16	Med-Fast	1.17	2	100	22.0	10	20	4
27-34-244	MicroSpecial	2.44	3–18	Fast	1.26	2	107	23.0	10	20	4



CXT MS-X MicroSpecial (27-34-244)



TEAM DRAGON Z-SERIES Ceramic Graphite Technology



Third generation of our TEAM DRAGON series, has changed a lot when it comes to technology of creating the blanks as well as the way they are equipped, design and the offer of available models.

The CrossForce+ construction that's a guarantee dynamics, extremely fast action of the blank and enormous power of fight.

When it comes to equipment of the blanks, we decided for the newest combination of the Fuji Alconite K-series guides in KR-CONCEPT system and SK2 open handles. Further castings, lower weight of the rod. We added fully original project of the handle, which joins natural cork with rubber and black, hard EVA grip in four different ways, for four subgroups TEAM DRAGON series. The new thing is also making an offer where almost half of it are short rods, that length is from 6 to 8 feet (1.83 to 2.45 m).

In TEAM DRAGON blanks were used such prepreps by Japanese Toray company (in different proportions according to the type of the rod action):

- ❖ hi-modulus graphite 46 mln PSI, as basic construction material;
- ❖ 30 and 36 mln PSI graphites in the core and in the layers arranged obliquely to the axis of the blank;
- ❖ extra stiff and light 60 mln PSI graphite in such places of the blank where weight reduction and increasing the dynamics was important.

The main assumptions of the series are:

- ❖ very fast action – usually x-fast, and in a few specific models fast also;
- ❖ light, slim blanks;
- ❖ easy casting with light as well as with medium heavy lures;
- ❖ full bend under loading;
- ❖ extremely fast reaction of the rod during hook set and bite.



Finishing components of new TEAM DRAGON series are:

- ❖ Fuji Alconite K-series guides, selecting according to KR-CONCEPT;
- ❖ reel seat type SK2;
- ❖ Portuguese class AAA cork;
- ❖ so called rubber cork – very durable material joined cork and hard rubber, here two kinds were used; they differ in the proportion of the ingredients;
- ❖ the highest quality EVA grip;
- ❖ threads by Gudebrod;
- ❖ Trondak varnish.

Three the shortest blanks, in one piece construction, all for the spinning reel versions and for the multiplier. The range of the casting weight selected for fishing mainly for zanders and pikes. Handle made from two kinds of blends of cork and rubber, with a little bit of black grid, back reel seat divided.

Item no.	name	length [m]	c.w. [g]	action	transp. [m]	sec.	weight [g]	r.g. [cm]	pX	pS	pT
25-05-183	TD Z-series (spin.)	1.83	7–25	X-Fast	1.83	1	136	21.0	8	16	4
25-08-183	TD Z-series (spin.)	1.83	14–35	X-Fast	1.82	1	139	21.0	8	16	4
25-09-183	TD Z-series (spin.)	1.83	18–42	X-Fast	1.83	1	149	21.0	8	20	4



Five spinning rods, one of them with casting equipment. Two of them on the spigot type connector (2.28 cm, with c.w. to 25 and to 30 grams). All the rods are two pieces rods, the range of the length and casting weights is selected for fishing from the boat, mainly for zanders and pikes. The handle is made from two kinds of cork and rubber, with domination of the darker one, filled with black grid, back reel seat divided.

Item no.	name	length [m]	c.w. [g]	action	transp. [m]	sec.	weight [g]	r.g. [cm]	pX	pS	pT
25-15-228	TD Z-series (spin.)	2.28	7–25	X-Fast	1.18	2	150	24.0	10	20	4
25-16-213	TD Z-series (spin.)	2.13	7–28	Fast	1.11	2	142	22.0	9	16	4
25-16-214	TD Z-series (cast.)	2.13	7–28	Fast	1.11	2	149	22.0	10	10	4
25-17-227	TD Z-series (spin.)	2.28	12–30	X-Fast	1.18	2	151	24.0	10	20	4
25-17-228	TD Z-series (spin.)	2.28	10–30	Fast	1.18	2	148	24.0	10	20	4
25-17-245	TD Z-series (spin.)	2.45	10–30	Fast	1.26	2	155	24.0	10	20	4



The group of six spinning rods for medium and big rivers, from light rods 18-grams in fast action to very solid and very fast 42 grams rod. They enable selection of the equipment for the most lures used in the rivers for fishing for chub, asp, zanders or pikes. All the rods are two pieces rods with full handle. The handle mainly made from pure, natural cork, with a little bit of cork with rubber and black grid.

Item no.	name	length [m]	c.w. [g]	action	transp. [m]	sec.	weight [g]	r.g. [cm]	pX	pS	pT
25-23-245	TD Z-series (spin.)	2.45	4–18	Fast	1.27	2	163	24.0	10	20	4
25-23-275	TD Z-series (spin.)	2.75	4–18	Fast	1.42	2	159	26.0	11	20	4
25-26-275	TD Z-series (spin.)	2.75	10–28	X-Fast	1.43	2	178	26.0	11	20	4
25-28-275	TD Z-series (spin.)	2.75	14–35	X-Fast	1.42	2	187	26.0	11	20	5
25-28-290	TD Z-series (spin.)	2.90	14–35	X-Fast	1.50	2	198	28.0	11	25	5
25-29-290	TD Z-series (spin.)	2.90	18–42	X-Fast	1.50	2	197	28.0	11	25	5



Beautiful, for pieces "traveller" with t.w. to 28 grams and 2.45 m length. Thanks to progressive action it works excellently under the braid. Ideal solution for foreign trips for trout, zander, asp, when we do not really know what equipment to take, and the necessity of flight limits the amount of equipment. The part of the handle is divided.

Item no.	name	length [m]	c.w. [g]	action	transp. [m]	sec.	weight [g]	r.g. [cm]	pX	pS	pT
25-36-245	TD Z-series (spin.)	2.45	7–28	Fast	0.65	4	166	24.0	10	20	5



BIG BAIT

TORAY

Fuji KR CONCEPT



Dragon BIG BAIT are casting rods designed for big or very big baits such as jerkbait, pullbait or twitchbait. Their blanks are made only from the highest quality prepregs by Japanese Toray company.

The whole technological project was aimed to design rods which would be able to transfer very heavy loading to thousands of castings made with baits which would weigh more than 100 g. Walls of blanks are exceptionally thick but thanks to modern production technology which allows very precise arrangement of graphite prepregs when using the small amount of resin it does not increase the weight of rods. It can be easily stated that they are very light when it comes to its strength and Shield joint allowed to significantly reduce the diameter of the tip in its lower part.

BIG BAIT



Components of Big Bait series are:

- ❖ prepregs of Japanese Toray company with stiffness from; 24 mln do PSI to 46 mln PSI;
- ❖ protective x-mesh nano wrap layer on blank's surface;
- ❖ Fuji guides with rings Alconite wg KR-system;
- ❖ the highest quality tough EVA foam;
- ❖ finishing elements of the handle from 3K woven carbon;
- ❖ ECS type reel's handle;
- ❖ two-component, not aging epoxy TRONDAK varnish;
- ❖ Gudebrod threads.

Item no.	name	length [m]	c.w. [g]	action	power	transp. [m]	sec.	weight [g]	r.g. [cm]	pX	pS	pT
28-17-198	Jerk 90	1.98	30-90	Fast	H	1.03	2		30.0	9	12	6
28-18-198	Jerk 120	1.98	50-120	Fast	H	1.03	2	165	30.0	9	12	6
28-18-228	X-Cast 120	2.28	50-120	Fast	H	1.18	2		40.0	10	12	6
28-19-228	X-Cast 150	2.28	70-150	Fast	XH	1.18	2	195	40.0	10	12	6

Big Bait Jerk 120 (28-18-198)

G.P. CONCEPT



DRAGON G.P. Concept rods is a specialist series for anglers who fish for a special specimen, it is designed for fishing for big predators, mainly pikes, for heavy lures.

As the main assumptions we have accepted:

- ❖ fast action;
- ❖ progressive deflection under loading, what guarantees high percentage of caught fish;
- ❖ walls above standard thickness;
- ❖ unique reinforcement of connector.

Thanks to nanotechnology, the blanks from this series:

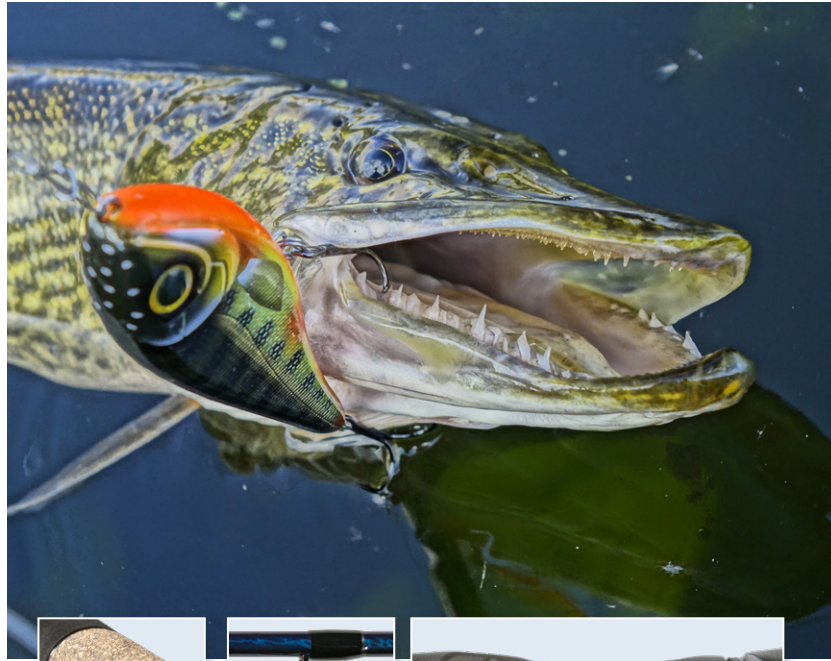
- ❖ weight less than similar power and length "traditional" blanks;
- ❖ their particular layers are more closely adhere to each other;
- ❖ they contain less epoxy resin without using CGT technology;
- ❖ they are more reproducible in mass production;
- ❖ less frequently contain: hidden defects";
- ❖ with relatively low weight and fast action, they are created from less stiff prepregs than similar "classic" rods.

In G.P. Concept blanks were used such prepregs by Japanese Toray company:

- ❖ graphite with increased stiffness 30 and 36 mln PSI as a basic constructional material;
- ❖ strength graphite 24 mln PSI in the core and middle part of the blank.

Finishing components of G.P. Concept series are:

- ❖ XO SiC type guides in special frames with increased strength;
- ❖ handle of the reel type ALS company;
- ❖ binary, not aging, epoxy varnish for frappings;
- ❖ Gudebrod frappings.



Two-pieces casting rods

Item no.	name	length [m]	c.w. [g]	action	transp. [m]	sec. weight [g]	r.g. [cm]	pX	pS	pT	
28-62-199	Jerk 80H	1.98	40-80	Fast	1.04	2	150	25.5	9	12	5
28-64-199	Jerk 120XH	1.98	80-120	Fast	1.04	2	147	25.5	9	12	5
28-75-229	Cast 130XH	2.28	90-130	Fast	1.19	2	40.0	10	10	5	
28-75-245	Cast 130XH	2.44	90-130	Fast	1.26	2	199	42.0	10	10	5
New 28-77-229	Cast 200XXH	2.28	120-200	Fast	1.18	2	197	40.5	10	12	6
New 28-77-244	Cast 200XXH	2.44	120-200	Fast	1.26	2	204	41.0	10	12	6



G.P. Concept Jerk 80H (28-62-199)

Two-pieces spinning rods for heavy lures

Item no.	name	length [m]	c.w. [g]	action	transp. [m]	sec. weight [g]	r.g. [cm]	pX	pS	pT	
28-71-228	Spinn 60MH	2.28	40-60	Fast	1.19	2	155	27.0	10	25	6
28-71-244	Spinn 60MH	2.44	40-60	Fast	1.27	2	160	27.0	10	25	6
28-73-228	Spinn 90H	2.28	60-90	Fast	1.19	2	162	28.0	9	25	6
28-73-244	Spinn 90H	2.44	60-90	Fast	1.27	2	171	28.5	9	25	6
28-75-228	Spinn 130XH	2.28	90-130	Fast	1.19	2	172	29.0	9	25	6
28-75-244	Spinn 130XH	2.44	90-130	Fast	1.27	2	185	29.0	9	25	6



G.P. Concept Spinn 130XH (28-75-228)

New Two-pieces twitching rods

Item no.	name	length [m]	c.w. [g]	action	transp. [m]	sec. weight [g]	r.g. [cm]	pX	pS	pT	
28-70-190	Twitch 42MH	1.90	18-42	X-Fast	0.99	2	131	24.0	8	25	5
28-70-191	Twitch Cast 42MH	1.90	18-42	X-Fast	0.99	2	130	22.0	9	10	5



G.P. Concept Twitch 42MH (28-70-190)

G.P. Concept Twitch Cast 42MH (28-70-191)



NANO POWER XT60P v.2

NanoPOWER **XT60P** v.2
XO SiC Super Guides



After the G.P. Concept series success we decided to transfer the construction of blanks for little lighter rods. Their blanks are strong but slim and perfectly transmit the work of the lure. They are characterised by fast action, progressive deflection and reinforced joint. They are relatively light especially if we take into consideration the loadings which they can stand.

In NanoPOWER v.2 given prepregs of Japanese Toray company were used:

- ❖ graphite with increased stiffness of 30 i 36 mln PSI as a basic construction material;
- ❖ resistance graphite 24 mln PSI in the core and the middle part of the blank.

Finishing components of NanoPOWER v.2 are:

- ❖ guides type XO SiC wa in special frames with higher strength;
- ❖ reel's handle of ALPS company;
- ❖ two ingredients, not aging epoxy frapping varnish;
- ❖ Gudebrod frappings.

Item no.	name	length [m]	c.w. [g]	action	transp. [m]	sec.	weight [g]	r.g. [cm]	pX	pS	pT
26-02-213	Jig 18ML	2.13	3-18	X-Fast	1.11	2	115	22.0	9	20	5
26-02-245	Jig 18ML	2.45	3-18	X-Fast	1.26	2	130	24.0	9	20	5
26-02-275	Jig 18ML	2.75	3-18	X-Fast	1.40	2	140	26.0	10	20	5
26-03-213	Jig 21M	2.13	5-21	X-Fast	1.11	2	121	23.0	9	20	5
26-03-245	Jig 21M	2.45	5-21	X-Fast	1.26	2	132	25.0	9	20	5
26-03-275	Jig 21M	2.75	5-21	X-Fast	1.40	2	149	27.0	10	20	5
26-05-213	Jig 28M	2.13	7-28	X-Fast	1.11	2	127	24.0	9	20	5
26-05-245	Jig 28M	2.45	7-28	X-Fast	1.26	2	141	26.0	9	20	5
26-05-275	Jig 28M	2.75	7-28	X-Fast	1.40	2	164	28.0	10	25	5
26-06-213	Jig 35MH	2.13	10-35	X-Fast	1.11	2	140	25.0	9	20	5
26-06-245	Jig 35MH	2.45	10-35	X-Fast	1.26	2		27.0	9	25	6
26-06-275	Jig 35MH	2.75	10-35	X-Fast	1.11	2	176	29.0	10	25	6
New 26-08-260	Jig 50H	2.60	21-50	X-Fast	1.35	2		28.0	10	25	6
New 26-09-275	Jig 60H	2.75	28-60	X-Fast	1.42	2		30.0	10	25	6



NanoPOWER XT 60P v.2 Jig 18ML (26-02-275)



X-TREME



Second generation of Dragon's series of rods from extra fast action, made using nanotechnology, thanks to which blank has smaller diameter, weights less than similar length and strength "traditional" blank, its individual layers adhere perfectly to each other and with lower weight and fast action is made from less stiff preregs.



Finishing components of X-TREME series are:

- ❖ Japanese Toray company preregs with stiffness from 24 mln do PSI to 46 mln PSI;
- ❖ SiC type guides;
- ❖ TVS reel's handle;
- ❖ the highest quality EVA foam;
- ❖ two-components, ageless, epoxy TRONDAK varnish;
- ❖ Gudebrod threads.

As the main assumptions we have accepted:

- ❖ X-Fast action;
- ❖ progressive blank's bend under loading, what guarantee comfort fight;
- ❖ blanks with walls of standard thickness but lower outer diameter;
- ❖ easiness of castings with light baits together with the possibility of transferring quite large dynamic loads;
- ❖ above-standard resistance to overload and mechanical damages what increase life span of the equipment.

Two-pieces spinning rods

Item no.	name	length [m]	c.w. [g]	action	power	transp. [m]	sec. weight [g]	r.g. [cm]	pX	pS	pT	
23-11-213	Finesse	2.13	3-18	X-Fast	ML	1.11	2	101	27.0	9	16	5
23-11-223	Finesse	2.23	3-18	X-Fast	ML	1.15	2	102	28.0	9	16	5
23-11-235	Finesse	2.35	3-18	X-Fast	ML	1.21	2	110	29.0	10	16	5
23-12-213	Creek	2.13	4-21	X-Fast	M	1.11	2	107	27.0	9	20	5
23-12-223	Creek	2.23	4-21	X-Fast	M	1.15	2	114	28.0	9	20	5
23-12-235	Creek	2.35	4-21	X-Fast	M	1.21	2	118	29.0	10	20	5
23-13-213	Stream	2.13	5-25	X-Fast	M	1.11	2	111	27.0	9	20	5
23-13-223	Stream	2.23	5-25	X-Fast	M	1.15	2	119	28.0	9	20	5
23-13-235	Stream	2.35	5-25	X-Fast	M	1.21	2	126	29.0	10	25	5
23-14-213	Lure	2.13	6-28	X-Fast	MH	1.11	2	119	27.0	9	20	5
23-14-223	Lure	2.23	6-28	X-Fast	MH	1.15	2	119	28.0	9	20	5
23-14-235	Lure	2.35	6-28	X-Fast	MH	1.21	2	130	29.0	10	25	5
23-15-213	Tough	2.13	10-35	X-Fast	H	1.11	2	118	27.0	9	20	5
23-15-223	Tough	2.23	10-35	X-Fast	H	1.15	2	129	28.0	9	20	5
23-15-235	Tough	2.35	10-35	X-Fast	H	1.21	2	136	29.0	10	25	5



X-treme Stream (23-13-213)

Two-pieces casting rods

Item no.	name	length [m]	c.w. [g]	action	power	transp. [m]	sec. weight [g]	r.g. [cm]	pX	pS	pT	
23-12-214	Creek	2.13	4-21	X-Fast	M	1.11	2	117	26.0	10	10	5
23-14-214	Lure	2.13	6-28	X-Fast	MH	1.11	2	126	26.0	10	10	5
23-15-214	Tough	2.13	10-35	X-Fast	H	1.11	2	127	26.0	10	10	5



X-treme Creek (23-12-214)

One-piece spinning rods

Item no.	name	length [m]	c.w. [g]	action	power	transp. [m]	sec. weight [g]	r.g. [cm]	pX	pS	pT	
23-11-197	Finesse	1.98	3-18	X-Fast	ML	1.98	1	96	26.0	8	16	5
23-12-197	Creek	1.98	4-21	X-Fast	M	1.98	1	98	26.0	8	20	5
23-13-197	Stream	1.98	5-25	X-Fast	M	1.98	1	105	26.0	8	20	5
23-14-197	Lure	1.98	6-28	X-Fast	MH	1.98	1	108	26.0	8	20	5
23-15-197	Tough	1.98	10-35	X-Fast	H	1.98	1	113	26.0	8	20	5



X-treme Stream (23-13-197)

One-piece casting rods

Item no.	name	length [m]	c.w. [g]	action	power	transp. [m]	sec. weight [g]	r.g. [cm]	pX	pS	pT	
23-12-199	Creek	1.98	4-21	X-Fast	M	1.98	1	112	26.0	10	10	5
23-14-199	Lure	1.98	6-28	X-Fast	MH	1.98	1	119	26.0	10	10	5
23-15-199	Tough	1.98	10-35	X-Fast	H	1.98	1	123	26.0	10	10	5



X-treme Lure (23-14-199)





Series of rods prepared by the experts when it comes to fishing for sea bass in the Spanish and Hungarian fisheries. Specific blank construction of high convergence of the handle and really sensible tip what predicates these rods to fish for zanders as well.

The multilayer construction which is used connects three kinds of graphites of Japanese Toray company:

- ❖ graphite 30 mln PSI, the main timber of the blank's core;
- ❖ high module graphite with high resistance from 36 to 46 mln PSI in middle layers;
- ❖ Hi-Endurance graphite composite used in the form of cross braid in the layer which is directly under outer layer what increases the resistance against damages.

Finishing components of BASS X-FURY are:

- ❖ SiC type guides with ceramic ring which perfectly dissipates heat, with reduced diameter and embedded in light but strong but flexible frame;
- ❖ handle with durable and light EVA foam;
- ❖ SK handle type, which shows whole blank under the reel's foot or multiplier;
- ❖ two-components, ageless, epoxy TRONDAK varnish;
- ❖ threads tow wraps of American Gudebrod company.

Two-pieces spinning rods

Item no.	name	[m / ft]	c.w. [g / oz.]	action	power	transp. [m]	sec.	weight [g]	r.g. [cm]	pX	pS	pT
23-01-213	Bass-X-Fury	2.13 • 7'0"	5-18 • 5/8	X-Fast	M	1.10	2	123	27.0	8	20	5
23-02-213	Bass-X-Fury	2.13 • 7'0"	7-21 • 3/4	X-Fast	M	1.10	2	127	27.0	8	20	5
23-03-213	Bass-X-Fury	2.13 • 7'0"	10-25 • 7/8	X-Fast	MH	1.10	2	134	27.0	8	20	5
23-05-213	Bass-X-Fury	2.13 • 7'0"	18-35 • 1 1/4	X-Fast	H	1.10	2	139	27.0	8	20	5



Bass-X-Fury (23-02-213)

Two-pieces casting rods

Item no.	name	[m / ft]	c.w. [g / oz.]	action	power	transp. [m]	sec.	weight [g]	r.g. [cm]	pX	pS	pT
23-01-214	Bass-X-Fury	2.13 • 7'0"	5-18 • 5/8	X-Fast	M	1.10	2	122	26.0	10	8	4
23-02-214	Bass-X-Fury	2.13 • 7'0"	7-21 • 3/4	X-Fast	M	1.10	2	125	26.0	10	8	4
23-03-214	Bass-X-Fury	2.13 • 7'0"	10-25 • 7/8	X-Fast	MH	1.10	2	128	26.0	10	8	4
23-05-214	Bass-X-Fury	2.13 • 7'0"	18-35 • 1 1/4	X-Fast	H	1.10	2	135	26.0	10	8	4



Bass-X-Fury (23-01-214)

One-piece spinning rods

Item no.	name	[m / ft]	c.w. [g / oz.]	action	power	transp. [m]	sec.	weight [g]	r.g. [cm]	pX	pS	pT
23-01-197	Bass-X-Fury	1.98 • 6'6"	5-18 • 5/8	X-Fast	M	1.98	1	105	25.0	8	20	5
23-02-197	Bass-X-Fury	1.98 • 6'6"	7-21 • 3/4	X-Fast	M	1.98	1	107	25.0	8	20	5
23-03-197	Bass-X-Fury	1.98 • 6'6"	10-25 • 7/8	X-Fast	MH	1.98	1	113	25.0	8	20	5
23-05-197	Bass-X-Fury	1.98 • 6'6"	18-35 • 1 1/4	X-Fast	H	1.98	1	121	25.0	8	20	5



Bass-X-Fury (23-01-197)

One-piece casting rods

Item no.	name	[m / ft]	c.w. [g / oz.]	action	power	transp. [m]	sec.	weight [g]	r.g. [cm]	pX	pS	pT
23-01-199	Bass-X-Fury	1.98 • 6'6"	5-18 • 5/8	X-Fast	M	1.98	1	104	24.0	10	8	4
23-02-199	Bass-X-Fury	1.98 • 6'6"	7-21 • 3/4	X-Fast	M	1.98	1	106	24.0	10	8	4
23-03-199	Bass-X-Fury	1.98 • 6'6"	10-25 • 7/8	X-Fast	MH	1.98	1	113	24.0	10	8	4
23-05-199	Bass-X-Fury	1.98 • 6'6"	18-35 • 1 1/4	X-Fast	H	1.98	1	119	24.0	10	8	4



Bass-X-Fury (23-01-199)



BLACK ROCK II



TORAY

BLACK ROCK II

HPG 99 Hi-Performance • 99% Graphite Fibres

In these series of blanks hi-module construction was used, based on two kinds of graphite by Japanese TORAY company:

- ❖ extra stiff 42 mln graphite (in outer layers);
- ❖ 24 and 30 mln PSI strength graphite in the core and middle part of the blank.

Additional protection of the blank against mechanical damages was created in Matrix Shield technology, which involves reeling few very thin and precisely grinded layers of the carbon tape.



Eleven two-pieces spinning rods with very diverse parameters. Actions from slow to very fast, maximum weight of the lures from 10 to even 42 g and lengths from 1.98 to 3.05 m.

Item no.	name	length [m]	c.w. [g]	action	transp. [m]	sec. weight [g]	r.g. [cm]	pX	pS	pT	
25-70-218	Black Rock II (spin.)	2.18	1-10	Slow	1.13	2	100	21.0	9	16	4
25-73-198	Black Rock II (spin.)	1.98	3-18	Fast	1.03	2	111	22.0	9	16	4
25-74-213	Black Rock II (spin.)	2.13	4-21	Med-Fast	1.11	2	115	22.0	9	16	4
25-75-218	Black Rock II (spin.)	2.18	5-25	Fast	1.13	2	121	23.0	9	16	4
25-75-245	Black Rock II (spin.)	2.45	5-25	Fast	1.26	2	133	24.0	10	20	4
25-75-275	Black Rock II (spin.)	2.75	5-25	Fast	1.41	2	151	26.0	11	20	4
25-75-305	Black Rock II (spin.)	3.05	5-25	Fast	1.56	2	163	28.0	11	20	4
25-76-218	Black Rock II (spin.)	2.18	7-28	Fast	1.13	2	131	23.0	9	16	4
25-77-275	Black Rock II (spin.)	2.75	7-30	X-Fast	1.41	2	173	26.0	11	20	4
25-78-275	Black Rock II (spin.)	2.75	10-35	X-Fast	1.41	2	192	27.0	11	20	4.5
25-79-218	Black Rock II (spin.)	2.18	14-42	X-Fast	1.13	2	145	24.0	9	20	4.5



Black Rock II (25-79-218)

Short, fast one piece rod with equipment for the reel, designed for light spinning from the boat or from the shore on small rivers.

Item no.	name	length [m]	c.w. [g]	action	transp. [m]	sec. weight [g]	r.g. [cm]	pX	pS	pT	
25-73-197	Black Rock II (spin.)	1.98	3-18	Fast	1.98	1	106	22.0	9	16	4



Black Rock II (25-73-197)

Two beautiful travels with fast action and very low weight in relation to operational parameters.

Item no.	name	length [m]	c.w. [g]	action	transp. [m]	sec. weight [g]	r.g. [cm]	pX	pS	pT	
25-75-194	Black Rock II (spin.)	1.95	5-25	Fast	0.49	4	121	21.0	8	16	4
25-78-212	Black Rock II (spin.)	2.13	10-35	Fast	0.54	4	143	23.0	9	20	4.5



Black Rock II (25-75-194)

The group of four casting rods, all of them two-pieces. The whole range of the most popular weights of the lures, from 3 to 18 g to 10-35 g.

Item no.	name	length [m]	c.w. [g]	action	transp. [m]	sec. weight [g]	r.g. [cm]	pX	pS	pT	
25-73-199	Black Rock II (cast.)	1.98	3-18	Fast	1.03	2	122	22.0	10	10	4
25-74-214	Black Rock II (cast.)	2.13	4-21	Med-Fast	1.11	2	130	22.0	10	10	4
25-75-214	Black Rock II (cast.)	2.13	5-25	Fast	1.11	2	134	22.0	10	10	4
25-78-214	Black Rock II (cast.)	2.13	10-35	Fast	1.11	2	149	23.0	10	10	4



Black Rock II (25-74-214)



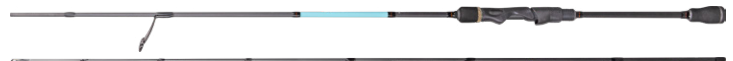
INVADER

Lure the Fish of Your Dream!

A series of 30 spinning and casting rods, designed for all predator fishing methods with small and medium soft and hard lures. The rods have slim and light blanks with a very fast action and progressive curve during the haul. They are very sensitive and can forgive mistakes made in the lobby.

Two-pieces spinning rods

Item no.	name	length [m]	c.w. [g]	action	transp. [m]	sec. weight [g]	r.g. [cm]	pX	pS	pT	
20-21-198	Spinn 14	1.98	2-14	X-Fast	1.02	2	103	22.0	8	20	5
20-21-213	Spinn 14	2.13	2-14	X-Fast	1.10	2	121	22.5	9	20	5
20-21-228	Spinn 14	2.28	2-14	X-Fast	1.18	2	126	23.0	10	20	5
20-21-245	Spinn 14	2.45	2-14	X-Fast	1.26	2	132	23.5	10	20	5
20-21-275	Spinn 14	2.75	2-14	X-Fast	1.40	2	157	25.0	11	25	5
20-22-198	Spinn 18	1.98	3-18	X-Fast	1.02	2	102	22.0	8	20	5
20-22-213	Spinn 18	2.13	3-18	X-Fast	1.10	2	118	22.5	9	20	5
20-22-228	Spinn 18	2.28	3-18	X-Fast	1.18	2	129	23.0	10	20	5
20-22-245	Spinn 18	2.45	3-18	X-Fast	1.26	2	132	23.5	10	20	5
20-22-275	Spinn 18	2.75	3-18	X-Fast	1.40	2	160	25.0	11	25	5
20-23-198	Spinn 21	1.98	4-21	X-Fast	1.02	2	112	22.5	8	20	5
20-23-213	Spinn 21	2.13	4-21	X-Fast	1.10	2	130	23.0	9	20	5
20-23-228	Spinn 21	2.28	4-21	X-Fast	1.18	2	134	23.5	10	20	5
20-23-245	Spinn 21	2.45	4-21	X-Fast	1.26	2	139	24.0	10	20	5
20-23-275	Spinn 21	2.75	4-21	X-Fast	1.40	2	168	25.5	11	25	5
20-25-198	Spinn 30	1.98	7-30	X-Fast	1.02	2	126	23.5	8	25	5
20-25-213	Spinn 30	2.13	7-30	X-Fast	1.10	2	136	24.0	9	25	5
20-25-228	Spinn 30	2.28	7-30	X-Fast	1.18	2	140	24.5	10	25	5
20-25-245	Spinn 30	2.45	7-30	X-Fast	1.26	2	155	25.0	10	25	5
20-25-275	Spinn 30	2.75	7-30	X-Fast	1.40	2	177	26.5	11	25	5



Invader Spinn 14 (20-21-198)

Two-pieces casting rods

Item no.	name	length [m]	c.w. [g]	action	transp. [m]	sec. weight [g]	r.g. [cm]	pX	pS	pT	
20-22-214	Cast 18	2.13	3-18	X-Fast	1.10	2	114	23.0	10	10	4
20-23-214	Cast 21	2.13	4-21	X-Fast	1.10	2	124	23.0	10	10	4
20-25-214	Cast 30	2.13	7-30	X-Fast	1.10	2	130	24.0	10	10	4



Invader Cast 18 (20-22-214)

One-piece spinning rods

Item no.	name	length [m]	c.w. [g]	action	transp. [m]	sec. weight [g]	r.g. [cm]	pX	pS	pT	
20-21-197	Spinn 14	1.98	2-14	X-Fast	1.98	1	100	22.0	8	20	5
20-22-197	Spinn 18	1.98	3-18	X-Fast	1.98	1	103	22.0	8	20	5
20-23-197	Spinn 21	1.98	4-21	X-Fast	1.98	1	103	22.5	8	20	5
20-25-197	Spinn 30	1.98	7-30	X-Fast	1.98	1	117	23.5	8	25	5



Invader Spinn 30 (20-25-197)

One-piece casting rods

Item no.	name	length [m]	c.w. [g]	action	transp. [m]	sec. weight [g]	r.g. [cm]	pX	pS	pT	
20-22-199	Cast 18	1.98	3-18	X-Fast	1.98	1	101	22.5	9	10	4
20-23-199	Cast 21	1.98	4-21	X-Fast	1.98	1	102	22.5	9	10	4
20-25-199	Cast 30	1.98	7-30	X-Fast	1.98	1	109	23.5	9	10	4



Invader Cast 30 (20-25-199)



FINESSE JIG



Enjoy Finesse Fishing

FINESSE

Wide when it comes to offered lengths and casting weights series of spinning for all the sophisticated methods of fishing for predators for small and medium, soft and hard baits. Light, slender and fast blanks of these spinning rods will meet the expectations of all anglers.

Finishing components of FINESSE JIG are:

- ❖ SIC type guides with ceramic ring which perfectly dissipates heat, with reduced diameter and embedded in light but strong but flexible frame;
- ❖ handle with durable and light EVA foam and ground cork;
- ❖ modern IPS and ACS handles;
- ❖ two- components, ageless, epoxy TRONDAK varnish;
- ❖ threads tow wraps of American Gudebrod company.

Multi layer construction connects three kinds of Toray company graphites:

- ❖ 24 i 30 mln PSI graphites as a main timber of the blank's core;
- ❖ high module graphites with resistance of 36 i 40 mln PSI in the places in blanks where the weight reduction and speed up the action was necessary;
- ❖ Hi-Endurance graphite composite in outer layer which increase the resistance against damages.



Two-pieces casting rods

Item no.	name	length [m]	c.w. [g]	action	transp. [m]	sec.	weight [g]	r.g. [cm]	pX	pS	pT
20-01-199	Jig 7	1.98	0.5-7	X-Fast	1.03	2	100	26.0	11	10	4
20-03-199	Jig 12	1.98	2-12	X-Fast	1.03	2	102	26.0	11	10	4
20-05-199	Jig 18	1.98	4-18	X-Fast	1.03	2	108	27.0	11	10	4
20-07-199	Jig 25	1.98	6-25	X-Fast	1.03	2	113	27.0	11	10	4



Finesse Jig 12 (20-03-199)

Item no.	name	length [m]	c.w. [g]	action	transp. [m]	sec.	weight [g]	r.g. [cm]	pX	pS	pT
20-01-198	Jig 7	1.98	0.5-7	X-Fast	1.03	2	92	26.0	8	16	4
20-01-213	Jig 7	2.13	0.5-7	X-Fast	1.10	2	101	26.0	9	16	4
20-01-228	Jig 7	2.28	0.5-7	X-Fast	1.18	2	105	27.0	9	16	4
20-01-245	Jig 7	2.45	0.5-7	X-Fast	1.25	2	110	28.0	9	16	4
20-03-198	Jig 12	1.98	2-12	X-Fast	1.03	2	95	26.0	8	16	4
20-03-213	Jig 12	2.13	2-12	X-Fast	1.10	2	100	26.0	9	16	4
20-03-228	Jig 12	2.28	2-12	X-Fast	1.18	2	107	27.0	9	16	4
20-03-245	Jig 12	2.45	2-12	X-Fast	1.25	2	114	28.0	9	16	4
20-03-275	Jig 12	2.75	2-12	X-Fast	1.40	2	125	30.0	10	16	4
20-05-198	Jig 18	1.98	4-18	X-Fast	1.03	2	103	27.0	8	20	4
20-05-213	Jig 18	2.13	4-18	X-Fast	1.10	2	108	27.0	9	20	4
20-05-228	Jig 18	2.28	4-18	X-Fast	1.18	2	115	28.0	9	20	4
20-05-245	Jig 18	2.45	4-18	X-Fast	1.25	2	119	29.0	9	20	4
20-05-275	Jig 18	2.75	4-18	X-Fast	1.40	2	131	31.0	10	20	4
20-07-198	Jig 25	1.98	6-25	X-Fast	1.03	2	108	27.0	8	25	5
20-07-213	Jig 25	2.13	6-25	X-Fast	1.10	2	111	27.0	9	25	5
20-07-228	Jig 25	2.28	6-25	X-Fast	1.18	2	121	28.0	9	25	5
20-07-245	Jig 25	2.45	6-25	X-Fast	1.25	2	127	29.0	9	25	5
20-07-275	Jig 25	2.75	6-25	X-Fast	1.40	2	140	31.0	10	25	5

Two-pieces spinning rods



Finesse Jig 25 (20-07-228)

One-piece spinning rods



Finesse Jig 25 (20-07-197)

Item no.	name	length [m]	c.w. [g]	action	transp. [m]	sec.	weight [g]	r.g. [cm]	pX	pS	pT
20-01-197	Jig 7	1.98	0.5-7	X-Fast	1.98	1	91	26.0	8	16	4
20-03-197	Jig 12	1.98	2-12	X-Fast	1.98	1	94	26.0	8	16	4
20-05-197	Jig 18	1.98	4-18	X-Fast	1.98	1	98	27.0	8	20	4
20-07-197	Jig 25	1.98	6-25	X-Fast	1.98	1	108	27.0	8	25	5

pX – quantity of the guides pS – size of the lead guide pT – size of the top guide



FLASH XC40P



Flash XC40P

Multi layer construction joins three kinds of graphites from Japanese Toray company:

- ❖ 30 mln PSI graphite which is the main timber of the blank's core
- ❖ high module graphites with high durability, from 36 to 46 mln PSI, in intermediate layers
- ❖ graphite composite XC40P X-CROSS Hi-Endurance used in the form of cross braid in outer layer, which increases resistance to damages.

All the elements used with FLASH XC40P rod meet the quality standards set by Dragon company:

- ❖ SiC guides, with ceramic ring, which perfectly dissipates the heat, with reduced diameter and mass in light and elastic frame
- ❖ handles joining different kinds of composite materials on the basis of a cork, with hard, light and durable EVA foam
- ❖ DPS handles, with carbon insert what enables the anglers to feel the lure better
- ❖ threads to frappings by American Gudebrod company.

Two-pieces jig rods with solid tip



Flash XC40P Swimbait 21 (24-06-245)

Item no.	name	length [m]	c.w. [g]	action	transp. [m]	sec. weight [g]	r.g. [cm]	pX	pS	pT	
24-00-213	Feeling 8	2.13	1-8	Fast	1.10	2	123	22.5	9	20	4
24-00-245	Feeling 8	2.45	1-8	Fast	1.26	2	138	23.0	10	20	4
24-00-275	Feeling 8	2.75	1-8	Fast	1.42	2	161	25.5	11	20	4
24-01-213	Feeling 12	2.13	3-12	Fast	1.10	2	127	23.0	9	20	4
24-01-245	Feeling 12	2.45	3-12	Fast	1.26	2	140	24.0	10	20	4
24-01-275	Feeling 12	2.75	3-12	Fast	1.42	2	157	25.5	11	20	4

Item no.	name	length [m]	c.w. [g]	action	transp. [m]	sec. weight [g]	r.g. [cm]	pX	pS	pT	
24-02-213	Feeling 15	2.13	4-15	X-Fast	1.10	2	138	23.0	9	20	4
24-02-245	Feeling 15	2.45	4-15	X-Fast	1.26	2	151	24.0	10	20	4
24-02-275	Feeling 15	2.75	4-15	X-Fast	1.42	2	164	25.5	11	20	4
24-04-213	Feeling 20	2.13	5-20	X-Fast	1.10	2	150	23.0	9	20	4
24-04-245	Feeling 20	2.45	5-20	X-Fast	1.26	2	165	24.5	10	20	4
24-04-275	Feeling 20	2.75	5-20	X-Fast	1.42	2	167	25.5	11	20	cc
24-06-245	Swimbait 21	2.45	5-21	Med-Fast	1.26	2	134	24.0	10	20	4

Two-pieces chub rod with slow action



Flash XC40P Slow Lure 8 (24-10-290)

Item no.	name	length [m]	c.w. [g]	action	transp. [m]	sec. weight [g]	r.g. [cm]	pX	pS	pT
24-10-290	Slow Lure 8	2.90	0.5-8	Slow	2	130	29.0	11	16	4

Two-pieces spinning rods



Flash XC40P LT Spinn 21 (24-14-275)

Item no.	name	length [m]	c.w. [g]	action	transp. [m]	sec. weight [g]	r.g. [cm]	pX	pS	pT	
24-13-213	LT Spinn 18	2.13	4-18	X-Fast	1.10	2	138	23.5	9	20	5
24-13-245	LT Spinn 18	2.45	4-18	X-Fast	1.26	2	153	24.5	10	20	5
24-13-275	LT Spinn 18	2.75	4-18	X-Fast	1.42	2	168	25.5	11	25	5
24-14-213	LT Spinn 21	2.13	5-21	X-Fast	1.10	2	139	23.0	9	20	5
24-14-245	LT Spinn 21	2.45	5-21	X-Fast	1.26	2	157	24.5	10	20	5
24-14-275	LT Spinn 21	2.75	5-21	X-Fast	1.42	2	173	25.5	11	25	5
24-15-245	SF Spinn 25	2.45	6-25	X-Fast	1.26	2	157	24.0	10	20	5
24-15-275	SF Spinn 25	2.75	6-25	X-Fast	1.42	2	183	27.0	11	25	5

Item no.	name	length [m]	c.w. [g]	action	transp. [m]	sec. weight [g]	r.g. [cm]	pX	pS	pT	
24-16-245	SF Spinn 30	2.45	7-30	X-Fast	1.26	2	164	24.0	10	25	5
24-16-275	SF Spinn 30	2.75	7-30	X-Fast	1.42	2	189	27.5	11	25	5
24-17-245	SF Spinn 35	2.45	10-35	X-Fast	1.26	2	177	27.0	10	25	5
24-17-275	SF Spinn 35	2.75	10-35	X-Fast	1.42	2	195	27.0	11	25	5
24-18-213	Predator 42	2.13	18-42	X-Fast	1.10	2	158	24.5	9	25	5
24-18-245	Predator 42	2.45	18-42	X-Fast	1.26	2	185	27.0	10	25	5
24-18-290	Predator 42	2.90	18-42	X-Fast	1.49	2	216	28.5	11	25	5

Two-pieces casting rods



Flash XC40P BB Jerk 60 (24-31-199)

Item no.	name	length [m]	c.w. [g]	action	transp. [m]	sec. weight [g]	r.g. [cm]	pX	pS	pT	
24-23-199	LT Cast 18	1.98	4-18	Fast	1.02	2	136	24.5	10	10	4
24-23-214	LT Cast 18	2.13	4-18	Fast	1.10	2	144	24.5	10	10	4
24-24-199	LT Cast 21	1.98	5-21	Fast	1.02	2	140	24.5	10	10	4
24-24-214	LT Cast 21	2.13	5-21	Fast	1.10	2	145	24.5	10	10	4

Item no.	name	length [m]	c.w. [g]	action	transp. [m]	sec. weight [g]	r.g. [cm]	pX	pS	pT	
24-25-199	LT Cast 25	1.98	6-25	Fast	1.02	2	136	24.5	10	10	4
24-25-214	LT Cast 25	2.13	6-25	Fast	1.10	2	145	24.5	10	10	4
24-31-199	BB Jerk 60	1.98	40-60	Fast	1.02	2	170	24.5	10	10	5
24-33-199	BB Jerk 90	1.98	60-90	Fast	1.02	2	168	24.5	10	12	5
24-35-199	BB Jerk 120	1.98	80-120	Fast	1.02	2	171	24.5	10	12	5

One-piece spinning rods

Item no.	name	length [m]	c.w. [g]	action	transp. [m]	sec. weight [g]	r.g. [cm]	pX	pS	pT	
24-43-197	ONE.Spinn 18	1.98	4-18	X-Fast	1.98	1	109	22.0	8	20	5
24-44-197	ONE.Spinn 21	1.98	5-21	X-Fast	1.98	1	116	22.0	8	20	5

Item no.	name	length [m]	c.w. [g]	action	transp. [m]	sec. weight [g]	r.g. [cm]	pX	pS	pT	
24-48-197	ONE.Spinn 42	1.98	18-42	X-Fast	1.98	1	144	22.0	8	25	5

One-piece casting rods

Item no.	name	length [m]	c.w. [g]	action	transp. [m]	sec. weight [g]	r.g. [cm]	pX	pS	pT	
24-43-199	ONE.Cast 18	1.98	4-18	Fast	1.98	1	127	24.5	10	10	4
24-44-199	ONE.Cast 21	1.98	5-21	Fast	1.98	1	138	24.5	10	10	4
24-45-199	ONE.Cast 25	1.98	6-25	Fast	1.98	1	146	24.5	10	10	4

Item no.	name	length [m]	c.w. [g]	action	transp. [m]	sec. weight [g]	r.g. [cm]	pX	pS	pT	
24-47-199	ONE.Jerk 60	1.98	40-60	Fast	1.98	1	152	24.5	10	10	5
24-48-199	ONE.Jerk 90	1.98	60-90	Fast	1.98	1	149	24.5	10	12	5
24-49-199	ONE.Jerk 120	1.98	80-120	Fast	1.98	1	154	24.5	10	12	5

Four-pieces spinning rods



Flash XC40P FOUR.Spinn 25 (24-55-244)

Item no.	name	length [m]	c.w. [g]	action	transp. [m]	sec. weight [g]	r.g. [cm]	pX	pS	pT	
24-55-244	FOUR.Spinn 25	2.45	6-25	X-Fast	0.67	4	157	24.5	10	20	5
24-57-244	FOUR.Spinn 35	2.45	10-35	X-Fast	0.67	4	183	27.5	10	25	5
24-58-274	FOUR.Spinn 42	2.75	18-42	X-Fast	0.74	4	204	27.5	11	25	6

Four-pieces casting rods



Flash XC40P FOUR.Jerk 90 (24-59-197)

Item no.	name	length [m]	c.w. [g]	action	transp. [m]	sec. weight [g]	r.g. [cm]	pX	pS	pT	
24-59-197	FOUR.Jerk 90	1.98	60-90	Fast	0.55	4	172	24.5	10	12	5

MILLENIUM HDG



The multi layer construction joins three kinds of graphites by Japanese Toray company:

- ❖ graphite 24 mln PSI which is the basic substance of the root of the blank;
- ❖ high module graphites with high resistance, from 24 to 46 mln PSI, in middle layers, especially in these places in blanks, where weight reduction and acceleration of action was needed;
- ❖ HDG Endurance graphite composite in outer layer, increasing resistance to damages.

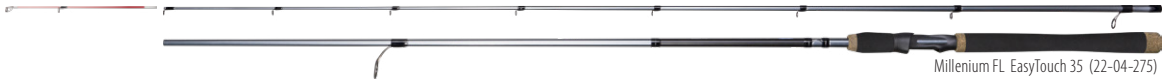
HOG MILLENIUM

All the elements used to create rods meet the quality standards set by Team Dragon:

- ❖ SIC type of guides, with ceramic ring perfectly transferring the heat, with reduced diameter and weight, light and embedded in light but strong and elastic frame
- ❖ the handles joining hard and durable EVA foam with grinded cork (Portuguese AA class cork in fly rod)
- ❖ modern handles TVS type, enabling direct contact of angler's hand with the blank (DPS in the strongest models)
- ❖ two two components, ageless, epoxy varnish for frappings
- ❖ threads for frappings by American Gudebrod company.

MILLENIUM FL – jig rods with solid tip

Item no.	name	length [m]	c.w. [g]	action	transp. [m]	sec. weight [g]	r.g. [cm]	pX	pS	pT
22-04-213	FL DropShot 25	2.13	7–25	Med-Fast	1.18	2	151	24.0	10	25
22-04-245	FL DropShot 25	2.45	7–25	Med-Fast	1.25	2	162	25.0	10	25
22-04-275	FL EasyTouch 35	2.75	10–35	X-Fast	1.32	2	174	28.0	11	25



Millenium FL EasyTouch 35 (22-04-275)

MILLENIUM CJ – casting jerk rods

Item no.	name	length [m]	c.w. [g]	action	transp. [m]	sec. weight [g]	r.g. [cm]	pX	pS	pT
22-16-199	CJ LiteJerk 60	1.98	30–60	Fast	1.03	2	186	28.0	10	16
22-17-199	CJ PikeChamp 80	1.98	40–80	Fast	1.04	2	184	28.0	10	16
22-18-199	CJ BigBait 100	1.98	60–100	Fast	1.03	2	204	28.0	10	16



Millenium HDG CJ LiteJerk 60 (22-16-199)

MILLENIUM SP – two-section spinning rods

Item no.	name	length [m]	c.w. [g]	action	transp. [m]	sec. weight [g]	r.g. [cm]	pX	pS	pT
22-05-275	SP ChubHunter 8	2.75	0.5–8	Slow	1.41	2	118	24.0	11	16
22-07-198	SP LiteSpinn 21	1.98	5–21	Fast	1.03	2	124	24.0	9	20
22-07-213	SP LiteSpinn 21	2.13	5–21	Fast	1.10	2	128	24.0	9	20
22-07-228	SP TroutZone 21	2.28	5–21	Fast	1.17	2	137	23.0	9	25
22-07-245	SP TroutZone 21	2.45	5–21	Fast	1.26	2	157	25.0	10	25
22-07-260	SP TroutZone 21	2.60	5–21	Fast	1.35	2	169	27.0	10	25
22-08-275	SP SuperFast 25	2.75	7–25	X-Fast	1.42	2	175	28.0	10	25
22-08-290	SP SuperFast 25	2.90	7–25	x-fast	1.49	2	183	27.0	11	25
22-08-305	SP SuperFast 25	3.05	7–25	X-Fast	1.57	2	203	31.5	11	25

Item no.	name	length [m]	c.w. [g]	action	transp. [m]	sec. weight [g]	r.g. [cm]	pX	pS	pT
22-10-228	SP CrankBait 28	2.28	10–28	Fast	1.17	2	141	24.0	9	25
22-10-245	SP CrankBait 28	2.45	10–28	Fast	1.25	2	159	25.0	10	25
22-10-260	SP CrankBait 28	2.60	10–28	Fast	1.33	2	166	27.0	10	25
22-11-260	SP SpeedKing 30	2.60	10–30	X-Fast	1.33	2	190	27.0	10	25
22-11-275	SP SpeedKing 30	2.75	10–30	X-Fast	1.41	2	204	28.0	11	25
22-11-290	SP SpeedKing 30	2.90	10–30	X-Fast	1.48	2	222	32.5	11	25
22-12-245	SP ZanderSpinn 35	2.45	10–35	Fast	1.26	2	183	28.0	10	25
22-13-275	SP PikeSpinn 35	2.75	10–35	Fast	1.41	2	217	27.5	11	25
22-14-305	SP SilverHunter 42	3.05	14–42	Fast	1.55	2	235	32.5	11	25
22-15-230	SP PikeSpinn 42	2.30	18–42	Fast	1.20	2	187	26.0	10	25



Millenium HDG SP ChubHunter 8 (22-05-275)

MILLENIUM FF – fly rod

Item no.	name	length	AFTMA	action	transp. [m]	cz. weight [g]	pX	pS	pT
22-20-275	FF SuperFly 5	2.75 m / 9'	#5	Fast	1.41	2	110	10	12



Millenium HDG FF SuperFly 5 (22-20-275)

MILLENIUM CF – specialist rods for biggest predators

Item no.	name	length [m]	c.w. [g]	action	transp. [m]	sec. weight [g]	r.g. [cm]	pX	pS	pT
22-22-260	CF PikeTrolling 200	2.60	75–200	Fast	1.36	2	283	36.0	9	25
22-23-330	CF CatZone 400	3.30	200–400	Med-Fast	1.30	2	392	53.0	8	30



Millenium HDG CF PikeTrolling 200 (22-22-260)

MILLENIUM SF – sea rods

Item no.	name	length [m]	c.w. [g]	action	transp. [m]	sec. weight [g]	r.g. [cm]	pX	pS	pT
22-27-275	SF SeiJig 150	2.75	70–150	Fast	1.42	2	219	29.0	9	20
22-28-275	SF TorskPilk 200	2.75	100–200	Fast	1.43	2	243	29.0	9	20
22-29-275	SF TorskPilk 250	2.75	120–250	Fast	1.43	2	257	31.5	9	20

Item no.	name	length [m]	c.w. [g]	action	transp. [m]	sec. weight [g]	r.g. [cm]	pX	pS	pT
22-30-231	SF KveiteJig S.D.R. 400	2.30	200–400	Med-Fast	1.20	2	222	35.0	9	16
22-31-244	SF TravellFour 200	2.45	100–200	Fast	0.67	4	201	29.0	8	20
22-32-275	SF SeaWarrior 250	2.75	70-150/120-250	Fast	1.40	2	281	35.0	9	30



Millenium HDG SF TorskPilk 200 (22-28-275)

MILLENIUM CS – casting rods

Item no.	name	length [m]	c.w. [g]	action	transp. [m]	sec. weight [g]	r.g. [cm]	pX	pS	pT
22-10-214	CS Cast 28	2.13	7–28	Fast	1.10	2	151	24.0	10	10
22-13-214	CS Cast 35	2.13	10–35	Fast	1.10	2	161	24.0	10	10



Millenium HDG CS Cast 35 (22-13-199)

EXCITE



SLIM DESIGN

TORAY

excite

Finishing components of EXCITE series are:

- ❖ SiC class guides;
- ❖ graphite, varnished IPS i ACS reel's handles;
- ❖ handles made from stiff, solid and black EVA foam;
- ❖ two-components, ageless, epoxy TRONDAK varnish;
- ❖ threads tow wraps of American Gudebrod company.

In blanks of the rods such prepregs were used:

- ❖ graphite 24 mln PSI and graphite of increased stiffness 30 mln PSI as a basic constructive material;
- ❖ strength graphite of new generation: Hi-Impact 24 mln PSI in outer layers of blank;
- ❖ epoxy glass prepregs (2 to 2,5% of weight depending on rod's model).

Two-pieces spinning rods

Item no.	name	length [m]	c.w. [g]	action	transp. [m]	sec. weight [g]	r.g. [cm]	pX	pS	pT	
20-82-198	Spinn 14	1.98	2-14	Med-Fast	1.03	2	111	27.5	8	20	5
20-82-213	Spinn 14	2.13	2-14	Med-Fast	1.11	2	115	27.5	9	20	5
20-82-228	Spinn 14	2.28	2-14	Fast	1.18	2	128	28.5	9	20	5
20-82-245	Spinn 14	2.45	2-14	Fast	1.26	2	128	30.0	10	20	5
20-83-213	Spinn 18	2.13	3-18	Med-Fast	1.11	2	119	27.5	9	20	5
20-83-228	Spinn 18	2.28	3-18	Med-Fast	1.18	2	124	28.5	9	20	5
20-83-245	Spinn 18	2.45	3-18	Fast	1.26	2	135	30.0	10	20	5
20-84-213	Spinn 21	2.13	4-21	Fast	1.11	2	122	27.5	9	20	5
20-84-228	Spinn 21	2.28	4-21	Fast	1.18	2	130	28.5	9	20	5
20-84-245	Spinn 21	2.45	4-21	X-Fast	1.26	2	134	30.0	10	20	5
20-84-275	Spinn 21	2.75	4-21	X-Fast	1.41	2	149	32.0	11	20	5
20-85-213	Spinn 25	2.13	5-25	Fast	1.11	2	130	29.0	9	20	5
20-85-228	Spinn 25	2.28	5-25	Fast	1.18	2	130	30.0	9	20	5

Item no.	name	length [m]	c.w. [g]	action	transp. [m]	sec. weight [g]	r.g. [cm]	pX	pS	pT	
20-85-245	Spinn 25	2.45	5-25	Fast	1.26	2	134	31.0	10	20	5
20-85-275	Spinn 25	2.75	5-25	X-Fast	1.41	2	157	32.0	11	20	5
20-87-213	Spinn 30	2.13	7-30	X-Fast	1.11	2	123	29.0	9	25	5
20-87-228	Spinn 30	2.28	7-30	X-Fast	1.18	2	134	30.0	9	25	5
20-87-245	Spinn 30	2.45	7-30	X-Fast	1.26	2	140	31.0	10	25	5
20-87-275	Spinn 30	2.75	7-30	X-Fast	1.41	2	152	32.5	11	25	6
20-87-290	Spinn 30	2.90	7-30	X-Fast	1.49	2	163	35.0	11	25	6
20-88-213	Spinn 35	2.13	10-35	X-Fast	1.11	2	138	30.0	9	25	5
20-88-228	Spinn 35	2.28	10-35	X-Fast	1.18	2	136	31.0	9	25	5
20-88-245	Spinn 35	2.45	10-35	X-Fast	1.26	2	150	32.0	10	25	6
20-88-275	Spinn 35	2.75	10-35	X-Fast	1.41	2	165	33.5	11	25	6
20-88-290	Spinn 35	2.90	10-35	X-Fast	1.49	2	179	35.0	11	25	6
20-89-213	Spinn 42	2.13	14-42	X-Fast	1.11	2	140	30.0	9	25	5
20-89-245	Spinn 42	2.45	14-42	X-Fast	1.26	2	157	32.0	10	25	6



One-piece spinning rods

Item no.	name	length [m]	c.w. [g]	action	transp. [m]	sec. weight [g]	r.g. [cm]	pX	pS	pT	
20-82-197	Spinn 14	1.98	2-14	X-Fast	1.98	1	97	27.5	8	20	5



Two-pieces casting rods

Item no.	name	length [m]	c.w. [g]	action	transp. [m]	sec. weight [g]	r.g. [cm]	pX	pS	pT	
20-83-214	Cast 18	2.13	3-18	Med-Fast	1.11	2	129	30.0	10	10	5
20-84-214	Cast 21	2.13	4-21	Fast	1.11	2	134	30.0	10	10	5
20-85-214	Cast 25	2.13	5-25	Fast	1.11	2	134	30.0	10	10	5
20-87-214	Cast 30	2.13	7-30	X-Fast	1.11	2	132	30.0	10	10	5
20-88-214	Cast 35	2.13	10-35	X-Fast	1.11	2	147	30.0	10	10	5



EXPRESS



SLIM DESIGN

TORAY

EXPRESS

Heavy Duty Spinning & Casting Rods designed by Team Dragon



In blanks of EXPRESS series such prepregs were used:

- ❖ graphite 24 mln PSI and graphite with increased stiffness 30 mln PSI as a basic construction material;
- ❖ endurance graphite of new generation: Hi-Impact 24 mln PSI external layers of the blank;
- ❖ glassy prepregs type epoxy glass (2 to 2,5 % of mass depending on the model of a rod) – in the blank's core.

Finishing components of EXPRESS series are:

- ❖ SiC class guides;
- ❖ DPS graphite handle;
- ❖ handles made from hard and durable, black EVA foam;
- ❖ binary, not aging epoxy varnish for frappings.

The set of dozens of two – parts spinning rods offering optional:

- 6 lengths in range of 1,98 to 3,05 m (6'6" to 10');
- 7 throwing weights (from 3–15 g to 18–42 g);
- 3 different actions from medium fast to very fast.

Item no.	name	length [m]	c.w. [g]	action	transp. [m]	sec. weight [g]	r.g. [cm]	pX	pS	pT	
20-62-198	Spinn 15	1.98	3–15	Med-Fast	1.03	2	98	25.5	9	20	5
20-63-213	Spinn 18	2.13	4–18	Med-Fast	1.11	2	115	24.5	9	20	5
20-64-198	Spinn 21	1.98	5–21	Fast	1.02	2	120	25.5	9	20	5
20-64-260	Egi Spinn 21	2.60	7–21	Med-Fast	1.33	2		27.0	10	25	5
20-65-198	Spinn 25	1.98	7–25	X-Fast	1.03	2	105	25.5	9	20	5
20-65-213	Spinn 25	2.13	7–25	X-Fast	1.11	2	109	25.5	9	20	5
20-65-228	Spinn 25	2.28	7–25	Fast	1.17	2	116	25.5	9	25	5
20-65-245	Spinn 25	2.45	7–25	Fast	1.26	2	128	26.0	10	25	5
20-67-198	Spinn 30	1.98	10–30	X-Fast	1.03	2	104	25.5	9	20	5
20-67-213	Spinn 30	2.13	10–30	X-Fast	1.11	2	110	24.5	9	20	5
20-67-228	Spinn 30	2.28	10–30	X-Fast	1.18	2	117	25.0	9	25	5
20-67-245	Spinn 30	2.45	10–30	X-Fast	1.26	2	129	26.0	10	25	5
20-67-275	Spinn 30	2.75	10–30	X-Fast	1.41	2	151	28.0	11	25	6
20-68-198	Spinn 35	1.98	14–35	X-Fast	1.03	2	110	27.5	9	20	5
20-68-213	Spinn 35	2.13	14–35	X-Fast	1.11	2	121	25.5	9	25	5
20-68-228	Spinn 35	2.28	14–35	X-Fast	1.17	2	129	25.5	9	25	5
20-68-245	Spinn 35	2.45	14–35	X-Fast	1.26	2	148	26.5	10	25	6
20-68-275	Spinn 35	2.75	14–35	X-Fast	1.41	2	167	30.5	11	25	6
20-68-305	Spinn 35	3.05	14–35	X-Fast	1.56	2	193	32.5	11	25	6
20-69-213	Spinn 42	2.13	18–42	X-Fast	1.11	2	127	27.5	9	25	5
20-69-228	Spinn 42	2.28	18–42	X-Fast	1.17	2	132	27.5	9	25	6
20-69-245	Spinn 42	2.45	18–42	X-Fast	1.26	2	151	27.5	10	25	6



Express Spinn 15 (20-62-198)

Two casting rods supplementing EXPRESS series, offer basic lengths and weights ranges of the most commonly used lures.

Item no.	name	length [m]	c.w. [g]	action	transp. [m]	sec. weight [g]	r.g. [cm]	pX	pS	pT	
20-64-199	Cast 21	1.98	5–21	Fast	1.03	2	111	25.5	10	10	5
20-67-214	Cast 30	2.13	10–30	X-Fast	1.11	2	120	25.0	10	12	5



Express Cast 21 (20-64-199)

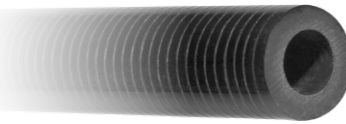


X-TREME HD

TORAY Fuji



X-TREME HD blanks are produced in Super Tight Wind® (S.T.W.) in 100% computer controlled production line allows to achieve unprecedented precision of reeling graphite preregs. They are arranged quite tight and they do not have to be grinded at any stage, what in result allows to put on a very thin core dozens of thin layers, having the blank which thickness of the case is very close to the inner diameter.



The section of the blank made in Super Tight Wind® technology.

The effect are the rods which looks like spinning rods with medium acton have the parameters of casting and fight reserved for solid pilker rods. The rod with casting weight to 140 g is so light and functional that during the tests gained the opinion of great rod for fishing for zanders from the descent or extremely soft lures. Low weight, great balance, power and dynamic and incredible feeling of the lure – it is X-TREME HD series.

Item no.	name	length [m]	c.w. [g]	action	transp. [m]	sec. weight [g]	r.g. [cm]	pX	pS	pT	
27-71-198	60S (spin.)	1.98	20–60	Fast	1.98	1	161	28.0	8	30	8
27-71-199	60C (cast.)	1.98	20–60	Fast	1.98	1		28.0	9	20	8
27-72-198	80S (spin.)	1.98	25–80	Fast	1.98	1	170	28.0	8	30	8
27-72-199	80C (cast.)	1.98	25–80	Fast	1.98	1		28.0	9	20	8
27-73-198	120S (spin.)	1.98	30–120	Fast	1.98	1		28.0	8	30	8
27-73-199	120C (cast.)	1.98	30–120	Fast	1.98	1		28.0	9	20	8
27-74-198	140S (spin.)	1.98	40–140	Fast	1.98	1	172	27.0	8	30	8
27-74-199	140C (cast.)	1.98	40–140	Fast	1.98	1	181	31.0	9	20	8
27-75-198	200S (spin.)	1.98	60–200	Fast	1.98	1	191	27.0	8	30	8
27-75-199	200C (cast.)	1.98	60–200	Fast	1.98	1	205	31.0	9	20	8
27-76-198	300S (spin.)	1.98	100–300	Fast	1.98	1	234	27.0	8	30	8
27-76-199	300C (cast.)	1.98	100–300	Fast	1.98	1	243	31.0	9	20	8

X-Treme HD



TEAM DRAGON FX

Team Dragon fx

Not so long ago, only medium action was considered to be proper for fly rod. Fast fly rods were criticized as the ones which tire wrist during castings, too "nervous" during fight and not so finesse. Time flies and the changes occur, and those which lead into the right direction on the market, we should just accept and take the benefits for ourselves. Nowadays the rod with fast action does not have to impede many hours casting, and lose fish with every mistake of the angler. The progress, which happened with graphite materials, and primarily with production technology of blanks is huge and bulldozes many old restrictions.

The series of four parts TEAM DRAGON fly rods, are the rods which let dynamically send the line for long distances, and perfectly matched bending will guarantee wonderful presentation of the lure, despite the fast action. They are very sensitive, light and strong and durable at the same time. Every angler when taking this rod into his/her hands will feel that this is the kind of rod which will change his/her achievements on water. It gives wider possibilities when it comes to reaching the position of fish, leading the fly and controlling the set. It concerns light rod for dry fly #4 and #8 which is great when looking for pikes and trout.

In FX blanks we used a wide range of graphite mats with different level of stiffness, matching them in optimal way to gain smooth bending in each connector, fast action, small diameter, low weight and high strength. All the components of the rod are the highest level of quality: light, the guides which remove the heat with low coefficient of friction, handles from anodized duraluminum and 3K Wooden Carbon graphite and unique, selected only for fly rods, Portuguese cork. Each rod is packed in elegant, comfortable and safe tube, trimmed with durable fabric. Classic, olive colour of the blank and the tube fits dark frappings and delicate shades of golden and silver which can be found in decorations and elegant embroidery.



Item no.	name	length	AFTMA	action	transp. [m]	sec.	weight [g]	pX	pS	pT
28-54-275	Team Dragon FX	2.75 m / 9'	#4	Fast	0.73	4	88	11	10	S
28-55-275	Team Dragon FX	2.75 m / 9'	#5	Fast	0.73	4	92	11	16	L
28-55-305	Team Dragon FX	3.05 m / 10'	#5	Fast	0.80	4	113	11	12	L
28-56-275	Team Dragon FX	2.75 m / 9'	#6	Fast	0.73	4	93	11	16	L
28-56-290	Team Dragon FX	2.90 m / 9'6"	#6	Fast	0.76	4	107	11	16	L
28-56-305	Team Dragon FX	3.05 m / 10'	#6	Fast	0.80	4	117	11	12	L
28-57-290	Team Dragon FX	2.90 m / 9'6"	#7	Fast	0.76	4	114	11	16	L
28-57-305	Team Dragon FX	3.05 m / 10'	#7	Fast	0.80	4	122	11	16	L
28-58-305	Team Dragon FX	3.05 m / 10'	#8	Fast	0.80	4	130	12	16	XL



Team Dragon FX #4 (28-54-275)



Team Dragon FX #7 (28-57-290)





BOAT MASTER TORAY

boat master

The group of spinning and casting sea rods. Quite light, sensitive and dynamic. They guarantee the highest level of comfort during fishing.

Boat Master TOURNAMENT PRO

Two long, two piece spinning rods, perfect when fishing for cods on the slow drop.

Item no.	name	length [m]	c.w. [g]	action	transp. [m]	sec. weight [g]	r.g. [cm]	pX	pS	pT
24-71-275	Tournament Pro	2.75	60-180	X-Fast	1.42	2	268	42	8	20 7
24-71-295	Tournament Pro	2.95	60-180	X-Fast	1.52	2	296	44	8	20 8



Boat Master Tournament Pro (29-71-295)

Boat Master JIG

Two-section rods for light and medium pilkers and large soft lures. Special construction of the tip allows extreme curve, what ensures good lure feeling and full control of the hooked fish.

Item no.	name	length [m]	c.w. [g]	action	transp. [m]	sec. weight [g]	r.g. [cm]	pX	pS	pT
24-70-180	Jig	1.80	40-200	X-Fast	0.95	2	213	36	8	20 7
24-70-200	Jig	2.00	40-200	X-Fast	1.05	2	234	36	9	20 7
24-70-220	Jig	2.20	40-200	X-Fast	1.05	2	260	36	10	20 7
24-70-240	Jig	2.40	40-200	X-Fast	1.25	2	285	36	11	20 7



Boat Master Jig (24-70-240)

Boat Master PILK S.D.R.

Rods for medium to heavy pilkers and dead fish fillet. One-section blanks with detachable handle.



Item no.	name	length [m]	c.w. [g]	action	transp. [m]	sec. weight [g]	r.g. [cm]	pX	pS	pT
24-73-201	Pilk S.D.R.	2.00	60-180	Fast	1.39	2	296	35	9	20 8
24-74-201	Pilk S.D.R.	2.00	100-250	Fast	1.39	2	321	35	9	20 8
24-75-201	Pilk S.D.R.	2.00	150-400	Fast	1.39	2	350	35	9	20 8



Boat Master Pilk S.D.R. (24-75-201)

Boat Master BOAT 50

Very strong (50 lb line test) sea rods with one piece blank and roller tip guide, designed for heavy fishing of big fish in the Norwegian sea and for Big Game.

Item no.	name	length [m]	c.w. [lb]	action	transp. [m]	sec. weight [g]	r.g. [cm]	pX	pS	pT
24-78-220	Boat 50	2.20	50	Medium	1.58	2	358	38,5	8	20 15



Boat Master Boat 50 (24-78-220)

Boat Master OFFSHORE

Offshore group includes 4 sea spinning and casting rods for fishing with pilkers from small boats. They are lighter and more sensible than traditional sea rods. Offshore Jig 2.60m is in our opinion also a great rod for lake trolling with very big crankbaits with additional weight.

Item no.	name	length [m]	c.w. [g]	action	transp. [m]	sec. weight [g]	r.g. [cm]	pX	pS	pT
24-70-245	Offshore Spinn	2.45	60-150	X-Fast	1.27	2	235	36	9	25 8
24-70-260	Offshore Spinn	2.60	60-150	X-Fast	1.34	2	247	35	9	25 8
24-76-245	Offshore Jig	2.45	80-250	Fast	1.27	2	272	35	9	25 8
24-76-260	Offshore Jig	2.60	80-250	Fast	1.35	2	280	35	9	25 8



Boat Master Offshore Jig (24-76-260)

TROLLING MASTER

'TORAY'

Trolling master

Rods for sea trolling, created for fishing for salmons. All made as inline, with internal guides and line going through the blank, to be used only with star drag reels.

Item no.	name	length [m]	c.w. [lb]	action	transp. [m]	sec.	weight [g]	r.g. [cm]
24-79-221	Inline Downrigger	2.20	25	X-Slow	1.15	2	36.0	
New 24-79-244	Inline Downrigger	2.45	25	X-Slow	1.27	2	315	41.0
24-79-245	Inline Planer	2.45	25	Slow	1.27	2	313	36.0
New 24-79-270	Inline Downrigger	2.70	25	X-Slow	1.41	2	355	41.0
New 24-79-271	Inline Planer	2.70	25	Slow	1.42	2	344	37.0



pX – quantity of the guides pS – size of the lead guide pT – size of the top guide

SURF MASTER



SURF MASTER EasyCast series is very high quality, thanks to high module graphite prepregs, SiC class guides in strenghtened frames and a few properly selected graphite wrappings in selected parts of the blanks.

Surf Master
EASY CAST

Item no.	name	length [m]	c.w. [g]	action	transp. [m]	sec.	weight [g]	r.g. [cm]	pX	pS	pT
24-92-390	EasyCast	3.90	120–200	Fast	1.38	3	497	71.5	8	35	12
24-92-420	EasyCast	4.20	120–200	Fast	1.50	3	522	71.5	8	35	12
24-92-450	EasyCast	4.50	120–200	Fast	1.57	3	584	71.5	8	35	12

